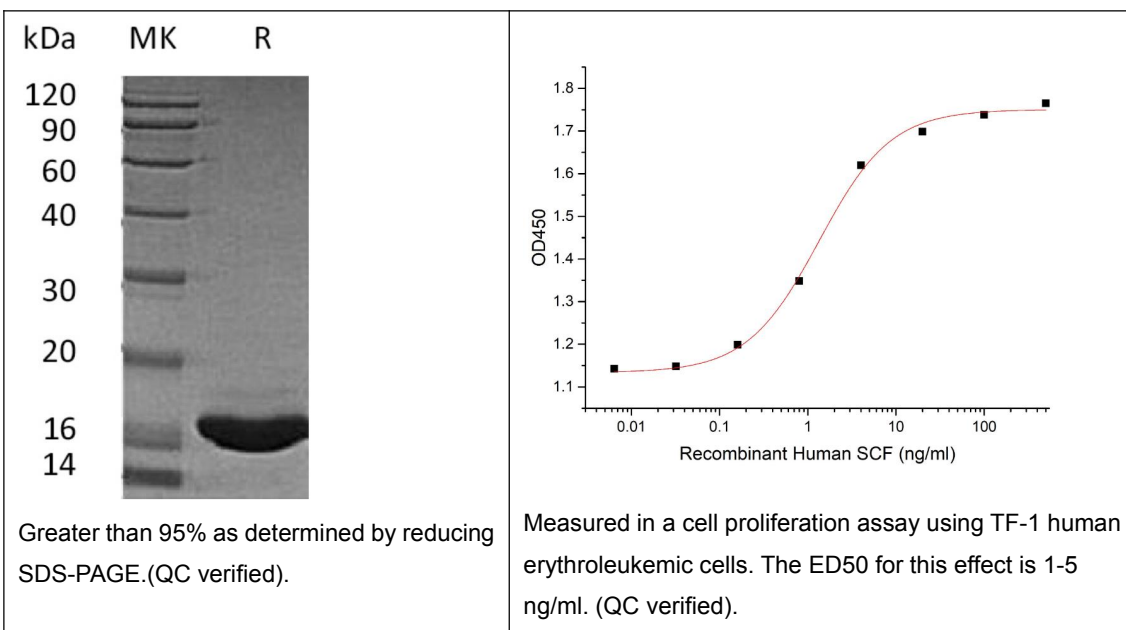




c-kit Ligand/SCF/KITLG

E21-034

Catalog Number:E21-034**Amount:**10ug**Altername:**Kit Ligand; Mast Cell Growth Factor; MGF; Stem Cell Factor; SCF; c-Kit ligand; KITLG; MGF; SCF**Storage/Stability:**Lyophilized protein should be stored at $< -20^{\circ}\text{C}$, though stable at room temperature for 3 weeks. Reconstituted protein solution can be stored at $4-7^{\circ}\text{C}$ for 2-7 days. Aliquots of reconstituted samples are stable at $< -20^{\circ}\text{C}$ for 3 months.**Background:**Stem Cell Factor (SCF) is a hematopoietic growth factor that exerts its activity at the early stages of hematopoiesis. SCF stimulates the proliferation of myeloid, erythroid, and lymphoid progenitors in bone marrow cultures and has been shown to act synergistically with colony stimulating factors.**Species:**Human**Reconstitution:**Always centrifuge tubes before opening. Do not mix by vortex or pipetting. It is not recommended to reconstitute to a concentration less than $100\text{ }\mu\text{g/ml}$. Dissolve the lyophilized protein in ddH₂O. Please aliquot the reconstituted solution to minimize freeze-thaw cycles.**Endotoxin:**Less than $0.1\text{ ng}/\mu\text{g}$ ($1\text{ IEU}/\mu\text{g}$) as determined by LAL test.**Purity:**Greater than 95% as determined by reducing SDS-PAGE.**Description:**Recombinant Human Stem Cell Factor is produced by our E.coli expression system and the target gene encoding Glu26-Ala189 is expressed.**Product State:**Lyophilized**Ship Description:**The product is shipped at ambient temperature.**Formulation:**Lyophilized from a $0.2\text{ }\mu\text{m}$ filtered solution of 20mM PB, 150mM NaCl, pH 7.0.**Expression system:**E.coli**For Research Use Only**