



PDGF-BB

E21-199

Catalog Number:E21-199

Amount:10ug

Altername:Platelet-Derived Growth Factor Subunit B; PDGF Subunit B; PDGF-2; Platelet-Derived Growth Factor B Chain; Platelet-Derived Growth Factor Beta Polypeptide; Proto-Oncogene c-Sis; Becaplermin; PDGFB; PDGF2; SIS

Storage/Stability:Lyophilized protein should be stored at < -20°C, though stable at room temperature for 3 weeks.Reconstituted protein solution can be stored at 4-7°C for 2-7 days.Aliquots of reconstituted samples are stable at < -20°C for 3 months.

Background:Platelet-Derived Growth Factor Subunit B (PDGFB) belongs to the PDGF/VEGF growth factor family. Platelet-derived growth factor is a potent mitogen for cells of mesenchymal origin. PDGFB can exist either as a homodimer (PDGF-BB) or as a heterodimer with the platelet-derived growth factor alpha polypeptide (PDGF-AB), where the dimers are connected by disulfide bonds. Mutations in this gene are associated with meningioma.Binding of PDGFB to its receptor elicits a variety of cellular responses. In addition, PDGFB is released by platelets upon wounding and plays an important role in stimulating adjacent cells to grow and thereby heals the wound.

Species:Human

Reconstitution:Always centrifuge tubes before opening. Do not mix by vortex or pipetting.It is not recommended to reconstitute to a concentration less than 100 µg/ml.Dissolve the lyophilized protein in ddH2O.Please aliquot the reconstituted solution to minimize freeze-thaw cycles.

Endotoxin:Less than 0.1 ng/µg (1 IEU/µg) as determined by LAL test.

Purity:Greater than 95% as determined by reducing SDS-PAGE.

Description:Recombinant Human Platelet-Derived Growth Factor BB is produced by our E.coli expression system and the target gene encoding Ser82-Thr190 is expressed.

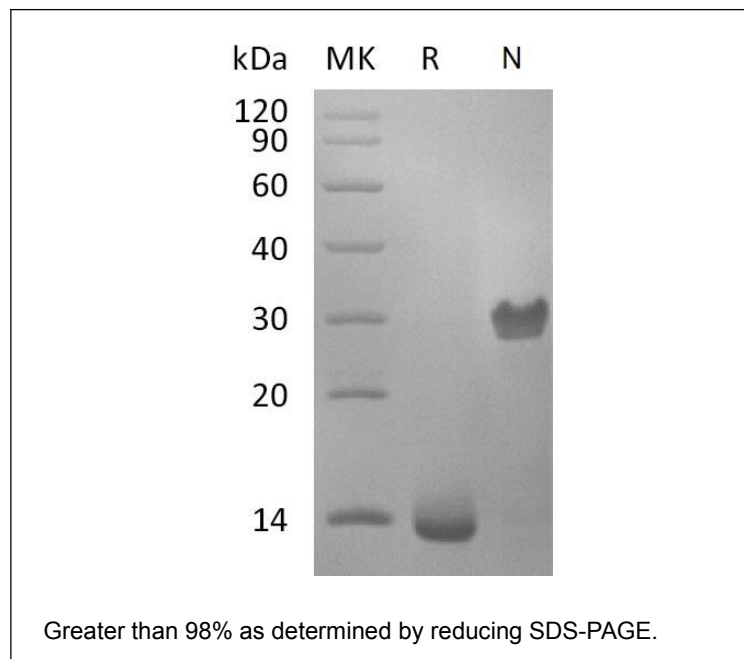
Product State:Lyophilized

Ship Description:The product is shipped at ambient temperature.

Formulation:Lyophilized from a 0.2 µm filtered solution of 4mM HCl.

For Research Use Only

Expression system: E.coli



For Research Use Only