



## TGFBR2/TGF-beta receptor type-2

E21-C10

**Catalog Number:**E21-C10

**Amount:**10ug

**Altername:**TGF-beta receptor type-2; TGF-beta type II receptor;TGFBR2; Transforming growth factor-beta receptor type II

**Storage/Stability:**Lyophilized protein should be stored at < -20°C, though stable at room temperature for 3 weeks.Reconstituted protein solution can be stored at 4-7°C for 2-7 days.Aliquots of reconstituted samples are stable at < -20°C for 3 months.

**Background:**TGFBR2 is a single-pass type I membrane protein and contains one protein kinase domain. TGFBR2 exists as a heterodimeric complex with another receptor protein and binds TGF-beta. Signals triggered through the TGF-beta receptor complex prompt various responses by the cell. One such response is to inhibit cell growth and division. Based on this action, the TGF-beta receptor type 2 is sometimes called a tumor suppressor. Defects in TGFBR2 have been associated with Marfan syndrome, Loeys-Deitz aortic aneurysm syndrome, Osler-Weber-Rendu syndrome and the development of various types of tumors.

**Species:**Human

**Reconstitution:**Always centrifuge tubes before opening. Do not mix by vortex or pipetting.It is not recommended to reconstitute to a concentration less than 100 µg/ml.Dissolve the lyophilized protein in ddH<sub>2</sub>O.Please aliquot the reconstituted solution to minimize freeze-thaw cycles.

**Endotoxin:**Less than 0.1 ng/µg (1 IEU/µg) as determined by LAL test.

**Purity:**Greater than 95% as determined by reducing SDS-PAGE.

**Description:**Recombinant Human Transforming Growth Factor-beta Receptor Type II is produced by our Mammalian expression system and the target gene encoding Thr23-Asp159 is expressed with a Fc tag at the C-terminus.

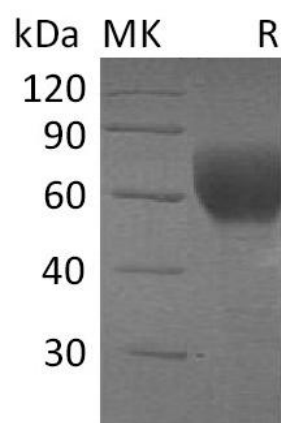
**Product State:**Lyophilized

**Ship Description:**The product is shipped at ambient temperature.

**Formulation:**Lyophilized from a 0.2 µm filtered solution of 20mM PB,150mM NaCl,pH7.2.

**Expression system:**Human cells

**For Research Use Only**



Greater than 95% as determined by reducing SDS-PAGE.

**For Research Use Only**