



## Kit ligand/KITLG/SCF

E21-D53

**Catalog Number:**E21-D53

**Amount:**10ug

**Altername:**Kit Ligand; Mast Cell Growth Factor; MGF; Stem Cell Factor; SCF; c-Kit ligand; KITLG; MGF; SCF

**Storage/Stability:**Lyophilized protein should be stored at < -20°C. Aliquots of reconstituted samples are stable at -20°C for 1 year.

**Background:**Stem Cell Factor (SCF) is a hematopoietic growth factor that exerts its activity at the early stages of hematopoiesis. SCF stimulates the proliferation of myeloid, erythroid, and lymphoid progenitors in bone marrow cultures and has been shown to act synergistically with colony stimulating factors.

**Species:**Human

**Reconstitution:**Always centrifuge tubes before opening. Do not mix by vortex or pipetting.

It is not recommended to reconstitute to a concentration less than 100 µg/ml.

Dissolve the lyophilized protein in ddH<sub>2</sub>O.

Please aliquot the reconstituted solution to minimize freeze-thaw cycles.

**Endotoxin:**Less than 0.1 ng/µg (1 IEU/µg) as determined by LAL test.

**Purity:**Greater than 95% as determined by reducing SDS-PAGE.

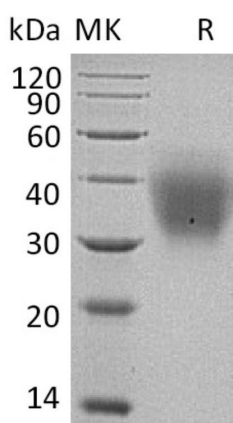
**Description:**Recombinant Human Stem Cell Factor is produced by our Mammalian expression system and the target gene encoding Glu26-His214 is expressed with a 6His tag at the C-terminus.

**Product State:**Lyophilized

**Ship Description:**The product is shipped at ambient temperature.

**Formulation:**Lyophilized from a 0.2 µm filtered solution of 20mM PB,150mM NaCl,pH7.4.

**Expression system:**Human cells



Greater than 95% as determined by reducing SDS-PAGE. (QC verified)

**For Research Use Only**