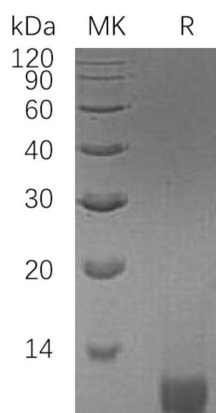




IGF2

E21-F61**Catalog Number:**E21-F61**Amount:**10ug**Altername:**Insulin-Like Growth Factor II; IGF-II; Somatomedin-A; IGF2; PP1446**Storage/Stability:**Lyophilized protein should be stored at < -20°C, though stable at room temperature for 3 weeks. Reconstituted protein solution can be stored at 4-7°C for 2-7 days. Aliquots of reconstituted samples are stable at < -20°C for 3 months.**Background:**Insulin-Like Growth Factor II (IGF2) belongs to the insulin family of polypeptide growth factors that is involved in development and growth. Members of this family are structurally homologous to proinsulin, and share higher sequence identity. IGF2 is expressed only from the paternally inherited allele and believed to be secreted by the liver and to circulate in the blood. IGF2 possess growth-promoting activity and can stimulate the proliferation and survival of various cell types including muscle, bone, and cartilage tissue in vitro. IGF2 is influenced by placental lactogen and may play a role in fetal development.**Species:**Human**Reconstitution:**Always centrifuge tubes before opening. Do not mix by vortex or pipetting. It is not recommended to reconstitute to a concentration less than 100 µg/ml. Dissolve the lyophilized protein in ddH2O. Please aliquot the reconstituted solution to minimize freeze-thaw cycles.**Endotoxin:**Less than 0.1 ng/µg (1 IEU/µg) as determined by LAL test.**Purity:**Greater than 95% as determined by reducing SDS-PAGE.**Description:**Recombinant Human Long Insulin-Like Growth Factor II is produced by our E.coli expression system and the target gene encoding Ala25-Glu91 is expressed.**Product State:**Lyophilized**Ship Description:**The product is shipped at ambient temperature.**Formulation:**Lyophilized from a 0.2 µm filtered solution of 5mM Hac, pH ~3.0.**Expression system:**E.coli

Greater than 95% as determined by reducing SDS-PAGE. (QC verified)

For Research Use Only