



Amphiregulin/AREG/AREGB/CRD GF/SDGF

E21-G04

Catalog Number:E21-G04**Amount:**10ug**Altername:**Amphiregulin; AR; Colorectum Cell-Derived Growth Factor; CRDGF; AREG; SDGF; AREGB**Storage/Stability:**Lyophilized protein should be stored at < -20°C. Aliquots of reconstituted samples are stable at -20°C for 1 year.

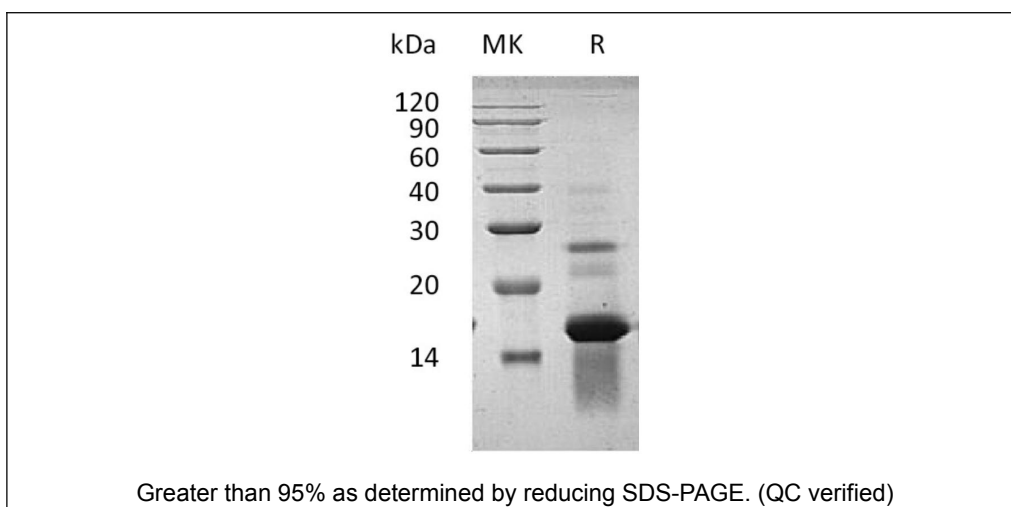
Background:Amphiregulin (AREG) is a single-pass membrane protein with 252 amino acids. AREG belongs to the amphiregulin family, which contains 1 EGF-like domain. AREG is expressed in a variety of tissues including ovary, placenta, lung, kidney, stomach, colon, and breast. It is related to Epidermal Growth Factor (EGF) and Transforming Growth Factor Alpha (TGF-alpha). As an EGF-related growth factor, AREG interacts with the EGF/TGF-alpha receptor to promote the growth of normal epithelial cells and inhibits the growth of certain aggressive carcinoma cell lines. AREG may also play a protective role in Bleomycin-Induced Pneumopathy.

Species:Human**Reconstitution:**Always centrifuge tubes before opening. Do not mix by vortex or pipetting.

It is not recommended to reconstitute to a concentration less than 100 µg/ml.

Dissolve the lyophilized protein in ddH₂O.

Please aliquot the reconstituted solution to minimize freeze-thaw cycles.

Endotoxin:Less than 0.1 ng/µg (1 IEU/µg) as determined by LAL test.**Purity:**Greater than 95% as determined by reducing SDS-PAGE.**Description:**Recombinant Human Amphiregulin is produced by our E.coli expression system and the target gene encoding Ser101-Lys198 is expressed.**Product State:**Lyophilized**Ship Description:**The product is shipped at ambient temperature.**Formulation:**Lyophilized from a 0.2 µm filtered solution of 20mM PB, 150mM NaCl, pH7.4.**Expression system:**E.coli**For Research Use Only**