



Fibroblast growth factor 10/FGF10

E21-R11

Catalog Number:E21-R11

Amount:10ug

Altername:Fibroblast growth factor 10;FGF-10;Keratinocyte growth factor 2;FGF10;KGF-2;KGF2

Storage/Stability:Lyophilized protein should be stored at < -20°C. Aliquots of reconstituted samples are stable at -20°C for 1 year.

Background:Fibroblast growth factor 10 (FGF-10, KGF-2), is a member of the fibroblast growth factor (FGF) family that includes FGF-3, -7, and -22. KGF-2 is secreted by mesenchymal cells and associates with extracellular FGF-BP. It preferentially binds and activates epithelial cell FGFR2 and interacts more weakly with FGFR1. It plays an important role in the regulation of embryonic development, cell proliferation and cell differentiation. It exhibits mitogenic activity for keratinizing epidermal cells, but essentially no activity for fibroblasts, which is similar to the biological activity of FGF7. FGF10 is required for normal branching morphogenesis. Defects in FGF10 are the cause of autosomal dominant aplasia of lacrimal and salivary glands (ALSG). ALSG has variable expressivity, and affected individuals may have aplasia or hypoplasia of the lacrimal, parotid, submandibular and sublingual glands and absence of the lacrimal puncta. The disorder is characterized by irritable eyes, recurrent eye infections, epiphora (constant tearing) and xerostomia (dryness of the mouth), which increases the risk of dental erosion, dental caries, periodontal disease and oral infections.

Species:Human

Reconstitution:Always centrifuge tubes before opening. Do not mix by vortex or pipetting.

It is not recommended to reconstitute to a concentration less than 100 µg/ml.

Dissolve the lyophilized protein in ddH₂O.

Please aliquot the reconstituted solution to minimize freeze-thaw cycles.

Endotoxin:Less than 0.1 ng/µg (1 IEU/µg) as determined by LAL test.

Purity:Greater than 95% as determined by reducing SDS-PAGE.

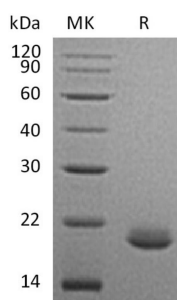
Description:Recombinant Human Fibroblast Growth Factor 10 is produced by our E.coli expression system and the target gene encoding Gln38-Ser208 is expressed.

Product State:Lyophilized

Ship Description:The product is shipped at ambient temperature.

Formulation:Lyophilized from a 0.2 µm filtered solution of 20mM Tris,200mM NaCl,pH8.0.

Expression system:E.coli



Greater than 95% as determined by reducing SDS-PAGE.

For Research Use Only