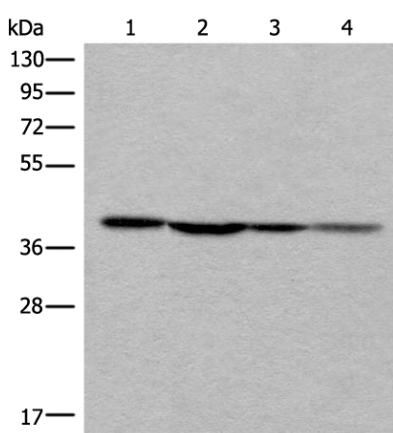




## ROM1 Rabbit pAb

**E2124877****Catalog Number:**E2124877**Amount:**100ul**Swiss-Prot No.:**Q03395**Altername:**ROM1**Immunogen:**Fusion protein of human ROM1**Purification:**Affinity purified**Reactivity:**Human,Mouse**Other Names:**ROM; RP7; ROSP1; TSPAN23**Cellular localization:**Membrane

**Relevance:**This gene is a member of a photoreceptor-specific gene family and encodes an integral membrane protein found in the photoreceptor disk rim of the eye. This protein can form homodimers or can heterodimerize with another photoreceptor, retinal degeneration slow (RDS). It is essential for disk morphogenesis, and may also function as an adhesion molecule involved in the stabilization and compaction of outer segment disks or in the maintenance of the curvature of the rim. Certain defects in this gene have been associated with the degenerative eye disease retinitis pigmentosa.

**Source:**Rabbit**Antibody type:**Polyclonal antibody**Isotype:**Rabbit IgG**Molecular Weight:**37 kDa**Entrez summary:**ROM1**Preservative:**-20°C, pH7.4 PBS, 0.05% NaN<sub>3</sub>, 40% Glycerol**Recommended Dilutions:**WB 500-2000

Western blot analysis of ROM1 in TM4, 293T, 231 and Hela lysates using ROM1 antibody.

**For Research Use Only**