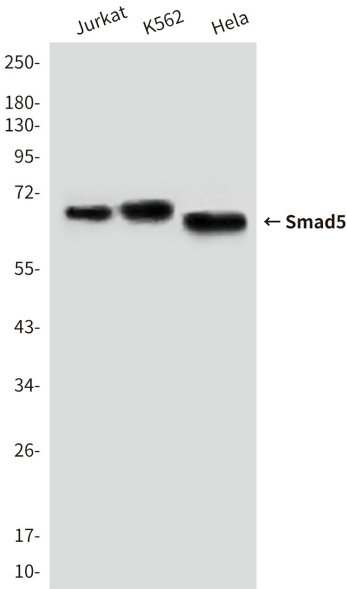
	<h1>Smad5 (4B10) Mouse mAb</h1>	E 2 2 0 0 3 5 7
--	---------------------------------	--------------------------------------

Research Area:	Autophagy antibody Cancer Cardiovascular Cell Biology Epigenetics & Nuclear Signaling Developmental Biologys Immunology Drug Discovery Products Metabolism Neuroscience Signal Transduction Stem Cells
Antibody type:	Monoclonal Antibody
Applications:	WB,ICC/IF,FC
Reactivity:	Human
Molecular Weight:	Calculated MW: 52 kDa; Observed MW: 60 kDa
Immunogen:	Purified recombinant human SMAD5 (C-terminus) protein fragments expressed in E.coli.
Gene ID:	4090
Swiss-Prot No.:	Q99717
Altername:	DKFZp781C1895; DKFZp781O1323; Dwfc; hSmad 5; hSmad5; JV5 1; JV5-1; MAD homolog 5; MAD mothers against decapentaplegic homolog 5; MAD; mothers against decapentaplegic homolog 5; MADH 5; MADH5; Mothers against decapentaplegic homolog 5; Mothers against DPP homolog 5; MusMLP; SMA and MAD related protein 5; SMAD 5; SMAD family member 5; SMAD mothers against DPP homolog 5; Smad5; Smad5; SMAD5_HUMAN.
Source:	Mouse

For Research Use Only

Isotype:	IgG1
Clone Number:	4B10-B10-B6
Purification:	Affinity Purified
Storage/Stability:	Store at 4°C short term. Aliquot and store at -20°C long term. Avoid freeze/thaw cycles.
Background:	Transcriptional modulator activated by BMP (bone morphogenetic proteins) type 1 receptor kinase. Smad5 is a receptor-regulated Smad (R-Smad). Smad5 is required for normal development of the cardiovascular system in vivo; lack of the Smad5 gene results in apoptosis of cardiac myocytes. 3 Upregulation of Smad5 has been reported to mediate apoptosis of gastric epithelial cells induced by Helicobacter pylori infection. Tissue specificity: Ubiquitous.
Shipping&Stablity:	Aliquot and store at -20°C. Avoid repeated freeze / thaw cycles.
Product Type:	Primary Antibody
Gene Name:	SMAD5
Recommended Dilutions:	WB: 1/500-1/1000 IF: 1/50-1/200 FC: 1/50-1/100
Form of Antibody:	Liquid in PBS containing 50% glycerol, 0.5% BSA and 0.02% sodium azide, pH 7.3.

For Research Use Only



Western blot analysis of SMAD5 (Cterminus) in HeLa, Jurkat and K562 lysates using SMAD5 (Cterminus) antibody.