



Notch1 Rabbit pAb

E220147

Catalog Number:E220147

Amount:100ul

Product Name:Notch1 Rabbit pAb

Gene ID:4851

SwissProt ID:P46531

Gene Name:NOTCH1

Alternative Names:NOTCH1; TAN1; Neurogenic locus notch homolog protein 1; Notch 1; hN1; Translocation-associated notch protein TAN-1

Background:Functions as a receptor for membrane-bound ligands Jagged1, Jagged2 and Delta1 to regulate cell-fate determination. Upon ligand activation through the released notch intracellular domain (NICD) it forms a transcriptional activator complex with RBPJ/RBPSUH and activates genes of the enhancer of split locus. Affects the implementation of differentiation, proliferation and apoptotic programs. Involved in angiogenesis; negatively regulates endothelial cell proliferation and migration and angiogenic sprouting.

Research Field:Neuroscience

Product Categories:Primary antibody

Host:Rabbit

Reactivity:Human,Mouse,Rat

Application:WB,IHC-P,ICC/IF,FC

Dilution Ratio:WB: 1/500-1/1000 IHC: 1/50-1/100 IF: 1/50-1/200 FC: 1/50-1/100

Molecular Weight:Calculated MW: 273 kDa; Observed MW: 125 kDa

Clonality:Polyclonal Antibody

Isotype: IgG1

Immunogen:A synthesized peptide derived from human Notch1

Purification:Affinity Chromatography

Conjugation:Unconjugated

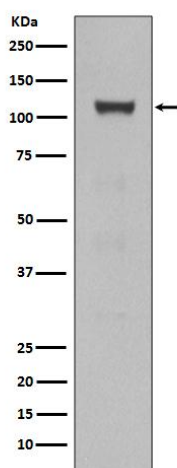
Modification:Unmodified

Form:Liquid

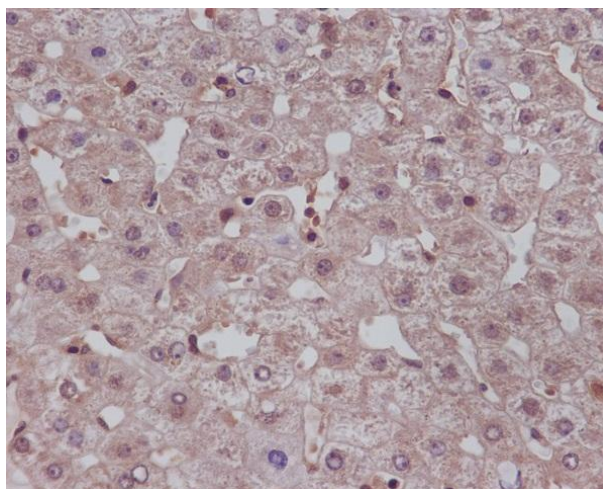
Buffer System:Rabbit IgG in phosphate buffered saline , pH 7.4, 150mM NaCl, 0.02% sodium azide and 50% glycerol.

Storage:Store at 4°C short term. Aliquot and store at -20°C long term. Avoid freeze/thaw cycles.

For Research Use Only



Western blot analysis of NOTCH1 in HEK293 lysates using Notch1 antibody.



Immunohistochemistry analysis of paraffin-embedded Human liver, using Notch1 antibody. High-pressure and temperature Sodium Citrate pH 6.0 was used for antigen retrieval.