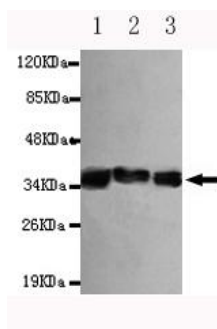




PPP2CA Antibody

E220158

Catalog Number	E220158-1, E220158-2
Amount	50µg/50µl, 100µg/100µl
Description	Mouse monoclonal IgG to PPP2CA
GeneBank ID	NM_002715.2
Swizz-prot ID	P67775
Immunogen	Recombinant fragment of human PPP2CA (N-terminus).
Reacts with	Human
Application notes	Recommended dilutions. ELISA: 1/5000 - 1/20000. WB: 1/100 - 1/2000.
Cellular localization	Cytoplasm,Nucleus, Centromere
Relevance	This gene encodes the phosphatase 2A catalytic subunit. Protein phosphatase 2A is one of the four major Ser/Thr phosphatases, and it is implicated in the negative control of cell growth and division.This gene encodes an alpha isoform of the catalytic subunit.
Purity	Protein G-Sepharose affinity purified
Storage buffer	Preservative: 0.02% Sodium Azide and 50% glycerol, 1% BSA, PBS, pH7.4.
Form	Liquid
Storage instructions	Aliquot and store at -20°C. Avoid repeated freeze / thaw cycles.



PPP2CA (N-terminus) antibody (E220158) at 1/1000 dilution. Lane1: CEM whole cell lysate 40ug/Lane. Lane2: K562 whole cell lysate 40ug/Lane. Lane3: MCF7 whole cell lysate 40ug/Lane. Predicted band size: 35KDa. Observed band size: 35KDa.

For Research Use Only