



## PPM1A (1D2) Mouse mAb

**E220160****Catalog Number:**E220160**Amount:**100ul**Product Name:**PPM1A (1D2) Mouse mAb**Gene ID:**5494**SwissProt ID:**P35813**Gene Name:**PPM1A**Alternative Names:**protein phosphatase; Mg<sup>2+</sup>/Mn<sup>2+</sup> dependent 1A; PP2CA; PP2Calpha; PP2C-ALPHA

**Background:**The protein encoded by this gene is a member of the PP2C family of Ser/Thr protein phosphatases. PP2C family members are known to be negative regulators of cell stress response pathways. This phosphatase dephosphorylates, and negatively regulates the activities of, MAP kinases and MAP kinase kinases. It has been shown to inhibit the activation of p38 and JNK kinase cascades induced by environmental stresses. This phosphatase can also dephosphorylate cyclin-dependent kinases, and thus may be involved in cell cycle control. Overexpression of this phosphatase is reported to activate the expression of the tumor suppressor gene TP53/p53, which leads to G2/M cell cycle arrest and apoptosis. Three alternatively spliced transcript variants encoding distinct isoforms have been described.

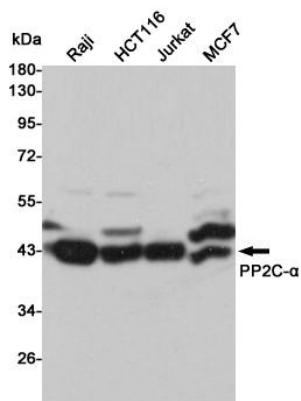
**Research Field:**Signal Transduction**Product Categories:**Primary antibody**Host:**Mouse**Reactivity:**Human,Mouse**Application:**WB,FC**Dilution Ratio:**WB: 1/500-1/1000 FC: 1/50-1/100**Molecular Weight:**Calculated MW: 42 kDa; Observed MW: 42 kDa**Clonality:**Monoclonal Antibody**Clonality No.:**1D2-E6-F2**Isotype:**IgG1**Immunogen:**Purified recombinant fragment of human PDHA1 expressed in E. Coli.**Purification:**Affinity Purified**Conjugation:**Unconjugated**Modification:**Unmodified

**For Research Use Only**

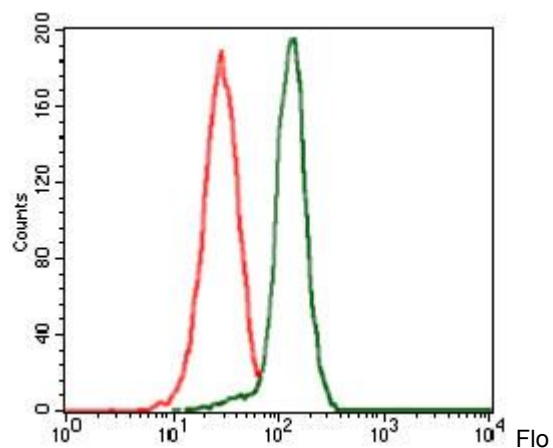
**Form:**Liquid

**Buffer System:**Purified antibody in PBS with 0.05% sodium azide

**Storage:**Store at 4°C short term. Aliquot and store at -20°C long term. Avoid freeze/thaw cycles.



Western blot analysis of PPM1A (1D2) in Raji, HCT116, Jurkat and MCF-7 lysates using PP2Cα antibody.



Flow cytometry analysis of HeLa cells using PPM1A antibody(green) and negative control (red).

**For Research Use Only**