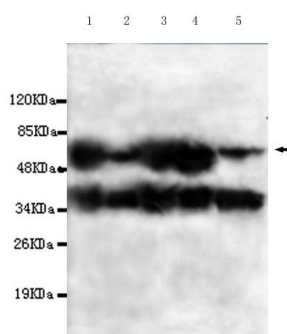




## PPP2CB Antibody

**E220182**

<b>Catalog Number</b>	E220182-1, E220182-2
<b>Amount</b>	50µg/50µl, 100µg/100µl
<b>Description</b>	Mouse monoclonal IgG to PPP2CB
<b>GeneBank ID</b>	NM_001009552.1
<b>Swiss-prot ID</b>	P62714
<b>Immunogen</b>	Recombinant fragment of human PPP2CB (C-terminus).
<b>Reacts with</b>	Human
<b>Application notes</b>	Recommended dilutions. ELISA: 1/5000 - 1/20000. WB: 1/100-1/2000.
<b>Cellular localization</b>	Cytoplasm, Nucleus
<b>Relevance</b>	This gene encodes the phosphatase 2A catalytic subunit. Protein phosphatase 2A is one of the four major Ser/Thr phosphatases, and it is implicated in the negative control of cell growth and division.
<b>Purity</b>	Protein G-Sepharose affinity purified.
<b>Storage buffer</b>	Preservative: 0.02% Sodium Azide and 50% glycerol, 1% BSA, PBS, pH7.4.
<b>Storage instructions</b>	Aliquot and store at -20°C. Avoid repeated freeze / thaw cycles.



PPP2CB (C-terminus) antibody (E220182) at 1/1000 dilution. Lane1: A549 whole cell lysate 40ug/Lane. Lane2: A431 whole cell lysate 40ug/Lane (EGF). Lane3: T47D whole cell lysate 40ug/Lane. Lane4: K562 whole cell lysate 40ug/Lane. Lane5: HeLa whole cell lysate 40ug/Lane. Predicted band size: 74KDa. Observed band size: 74KDa. Additional band size: 40KDa.

**For Research Use Only**