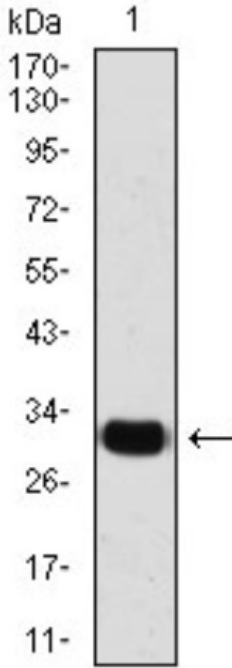
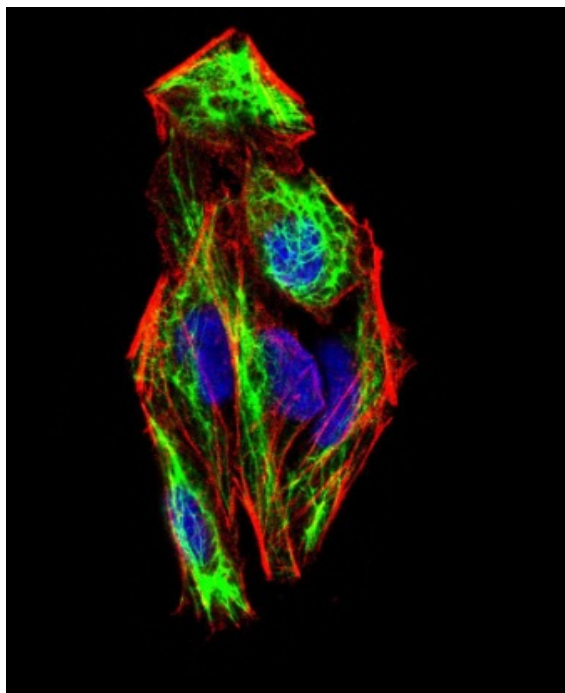
	<h2>SNAI2 Mouse mAb</h2>	E 2 2 2 1 2 0 5
--	--------------------------	--------------------------------------

<b>Swiss-Prot No.:</b>	O43623
<b>Altername:</b>	SNAI2
<b>Storage/Stability:</b>	Store at +4°C short term. Store at -20°C long term. Avoid freeze / thaw cycle.
<b>Immunogen:</b>	Purified recombinant fragment of human SNAI2 (AA: 100-200) expressed in E. Coli.
<b>Purification:</b>	Affinity purified
<b>Reactivity:</b>	Human
<b>Other Names:</b>	SLUG; WS2D; SLUGH1; SNAIL2
<b>Background:</b>	This gene encodes a member of the Snail family of C2H2-type zinc finger transcription factors. The encoded protein acts as a transcriptional repressor that binds to E-box motifs and is also likely to repress E-cadherin transcription in breast carcinoma. This protein is involved in epithelial-mesenchymal transitions and has antiapoptotic activity. Mutations in this gene may be associated with sporadic cases of neural tube defects.
<b>Gene ID:</b>	6591
<b>Cellular localization:</b>	Cytoplasm, Nucleus
<b>Source:</b>	Mouse

**For Research Use Only**

<b>Antibody type:</b>	Monoclonal antibody
<b>Isotype:</b>	Mouse IgG1
<b>Molecular Weight:</b>	30kDa
<b>Preservative:</b>	Purified antibody from tissue culture in PBS with 0.05% sodium azide
<b>Recommended Dilutions:</b>	WB: 1/500 - 1/2000; IHC: 1/200 - 1/1000; ICC: 1/200 - 1/1000; FCM: 1/200 - 1/400; Elisa: 1/10000
<b>Clone Number:</b>	6C2B12;9B9D8
	 <p>Western blot analysis of SNAI2 in MCF-7 lysates using SNAI2 antibody.</p>



Immunofluorescence analysis of SNAI2 in Hela cells using SNAI2 antibody (green). Blue: DRAQ5 fluorescent DNA dye. Red: Actin filaments have been labeled with Alexa Fluor 555 phalloidin. Secondary antibody from Fisher

**Form of Antibody:**

Liquid in PBS containing 50% glycerol, 0.5% BSA and 0.02% sodium azide, pH 7.3.