



Nrf2 (Acetyl Lys599) Rabbit pAb

E2251323

Catalog Number: E2251323

Amount: 100ul

Swiss-Prot No.: Q16236

Altername: NFE2L2

Storage/Stability: -20°C/1 year

Immunogen: Synthesized acetyl-peptide derived from the C-terminal region of human Nrf2 around the acetylation site of K599.

Purification: Affinity purified

Reactivity: Human, Mouse, Rat

Other Names: NFE2L2; NRF2; Nuclear factor erythroid 2-related factor 2; NF-E2-related factor 2; NFE2-related factor 2; HEBP1; Nuclear factor, erythroid derived 2, like 2

Cellular localization: Cytoplasm, Nucleus

Antibody type: Polyclonal antibody

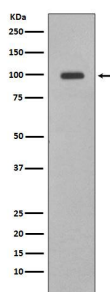
Isotype: Rabbit IgG

Molecular Weight: 75-100

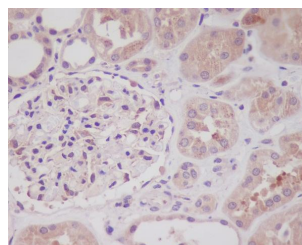
Preservative: Liquid in PBS containing 50% glycerol, 0.5% BSA and 0.02% sodium azide.

Recommended Dilutions: Western Blot: 1/500 - 1/2000. IHC-p: 1:100-300 ELISA: 1/10000. Not yet tested in other applications.

Form of Antibody: Liquid in PBS containing 50% glycerol, 0.5% BSA and 0.02% sodium azide, pH 7.3.



Western blot analysis of Nrf2 in HepG2 lysates using Nrf2 antibody.



Immunohistochemistry analysis of paraffin-embedded Human kidney using Nrf2 antibody. High-pressure and temperature Sodium Citrate pH 6.0 was used for antigen retrieval.

For Research Use Only