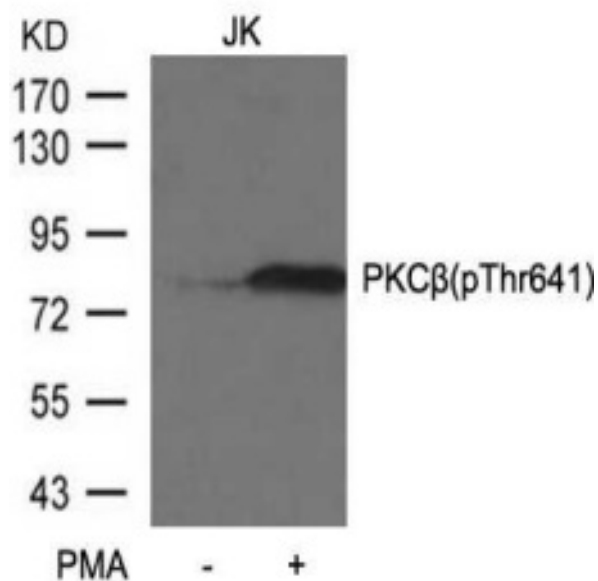
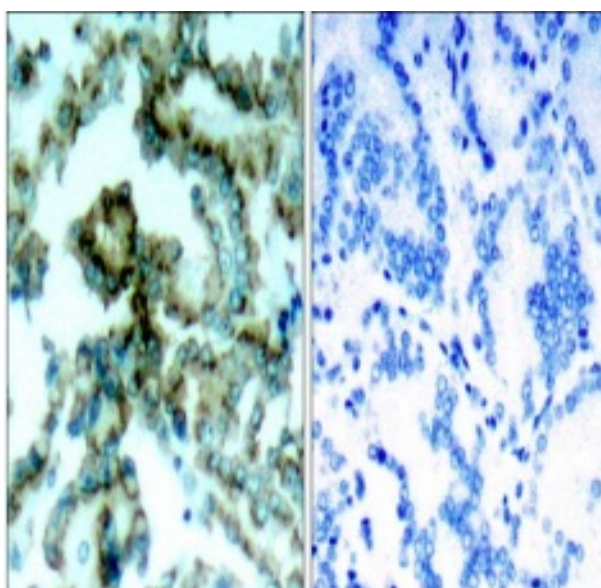
	PKCb(Phospho-Thr641) Rabbit pAb	E 2 3 1 0 1 6 2
--	--	--

Swiss-Prot No.:	P05771
Altername:	Prkcb
Immunogen:	Peptide-KLH
Purification:	Affinity purified
Reactivity:	Human,Mouse,Rat
Other Names:	KPCB_HUMAN ;PKC Beta ;PKC-B ;PKC-beta ;PKCB ;Prkcb ;PRKCB II ;PRKCB2 ;Protein kinase C beta ;Protein kinase C beta type ;
Cellular localization:	Cytoplasm, Membrane, Nucleus
Source:	Rabbit
Antibody type:	Polyclonal antibody
Isotype:	IgG
Molecular Weight:	77KDa
Preservative:	Supplied at 1.0mg/mL in phosphate buffered saline (without Mg ²⁺ and Ca ²⁺), pH 7.4, 150mM NaCl, 0.02% sodium azide and 50% glycerol.
Recommended Dilutions:	WB 1:500~1:1000,ICC 1:100~1:200,IHC 1:50~1:100

For Research Use Only



Western blot analysis of Phospho-PKC beta 2 (Thr641) in JK untreated or treated with PMA lysates using PKCbeta (Phospho-Thr641) antibody.



Immunohistochemistry analysis of paraffin-embedded Human lung carcinoma tissue using PKC β (Phospho-Thr641) antibody. High-pressure and temperature Sodium Citrate pH 6.0 was used for antigen retrieval.

Storage/Stability:	-20°C/1 year
---------------------------	--------------