



Smad3 (Phospho-S423/S425) Rabbit Polyclonal Antibody

E2380775

Catalog Number:E2380775

Amount:100ul

Swiss-Prot No:P84022

Storage/Stability:Store at +4°C short term. Store at -20°C long term. Avoid freeze / thaw cycle.

Immunogen:A synthesized peptide derived from human Phospho-Smad3 (S423 + S425)

Purification:Affinity Chromatography

Reactivity:Human,Mouse

Other Names:JV15-2, MAD-3, MADH3, Mad3, Mothers against DPP homolog 3, Mothers against decapentaplegic homolog 3, SMAD 3, Smad 3

Background:Receptor-regulated SMAD (R-SMAD) that is an intracellular signal transducer and transcriptional modulator activated by TGF-beta (transforming growth factor) and activin type 1 receptor kinases. Binds the TRE element in the promoter region of many genes that are regulated by TGF-beta and, on formation of the SMAD3/SMAD4 complex, activates transcription.

Cellular localization:Cytoplasm, Nucleus

Source:Rabbit

Antibody type:Polyclonal antibody

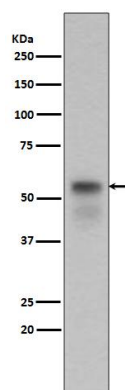
Isotype:Rabbit IgG

Molecular Weight:55kDa

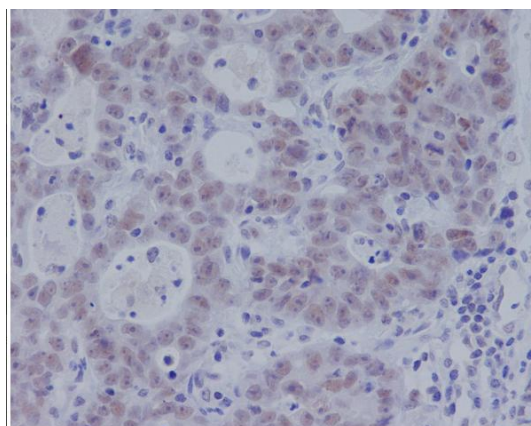
Preservative:Rabbit IgG in phosphate buffered saline , pH 7.4, 150mM NaCl, 0.02% sodium azide and 50% glycerol.

Recommended Dilutions:WB 1:500~1:2000. IHC 1:50~1:200. ICC/IF 1:50~1:200

For Research Use Only



Western blot analysis of Phospho-Smad3(S423/S425) expression in PC-12 cell lysate treated with 1% BSA.



Immunohistochemical analysis of paraffin-embedded human gastric adenocarcinoma using Phospho-Smad3 (S423/S425) Antibody.