



## Phospho-Smad2 (S250) Rabbit pAb

E2381410

**Catalog No.:**E2381410

**Amount:**100ul

**Swiss-Prot No.:**Q15796

**Storage/Stability:**Store at +4°C short term. Store at -20°C long term. Avoid freeze / thaw cycle.

**Immunogen:**A synthesized peptide derived from human Smad2

**Purification:**Affinity Chromatography

**Reactivity:**Human,Mouse,Rat

**Other Names:**JV18-1, MADH2, MADR2, Mad-related protein 2, Mothers against DPP homolog 2, Mothers against decapentaplegic homolog 2, Smad 2;

**Background:**The protein encoded by this gene belongs to the SMAD, a family of proteins similar to the gene products of the Drosophila gene 'mothers against decapentaplegic' (Mad) and the C. elegans gene Sma. SMAD proteins are signal transducers and transcriptional modulators that mediate multiple signaling pathways.

**Cellular localization:**Cytoplasm, Nucleus

**Source:**Rabbit

**Antibody type:**Polyclonal antibody

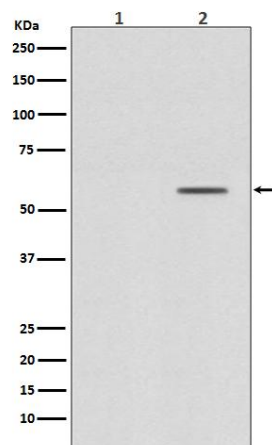
**Isotype:**Rabbit IgG

**Molecular Weight:**58kDa

**Preservative:**Rabbit IgG in phosphate buffered saline , pH 7.4, 150mM NaCl, 0.02% sodium azide and 50% glycerol.

**Recommended Dilutions:**WB 1:1000~1:2000 FC 1:20

**For Research Use Only**



Western blot analysis of Phospho-Smad2 (S250) in (1) HeLa treated with alkaline phosphatase lysates; (2) HeLa lysates using Phospho-Smad2 (Ser250) antibody.