



## ROM1 Rabbit pAb

E2824877

**Catalog Number:** E2824877

**Amount:** 100ul

**Product Name:** ROM1 Rabbit pAb

**Gene ID:** 6094

**SwissProt ID:** Q03395

**Gene Name:** ROM1

**Alternative Names:** ROM; RP7; ROSP1; TSPAN23

**Background:** This gene is a member of a photoreceptor-specific gene family and encodes an integral membrane protein found in the photoreceptor disk rim of the eye. This protein can form homodimers or can heterodimerize with another photoreceptor, retinal degeneration slow (RDS). It is essential for disk morphogenesis, and may also function as an adhesion molecule involved in the stabilization and compaction of outer segment disks or in the maintenance of the curvature of the rim. Certain defects in this gene have been associated with the degenerative eye disease retinitis pigmentosa.

**Research Field:** Neuroscience

**Product Categories:** Primary antibody

**Host:** Rabbit

**Reactivity:** Human, Mouse

**Application:** WB, IHC-P

**Dilution Ratio:** WB: 1/500-1/1000 IHC: 1/50-1/100

**Molecular Weight:** Calculated MW: 37 kDa; Observed MW: 37 kDa

**Clonality:** Polyclonal Antibody

**Isotype:** IgG

**Immunogen:** Fusion protein of human ROM1

**Purification:** Affinity Purified

**Conjugation:** Unconjugated

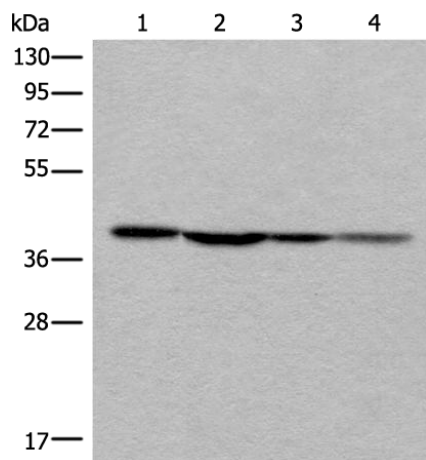
**Modification:** Unmodified

**Form:** Liquid

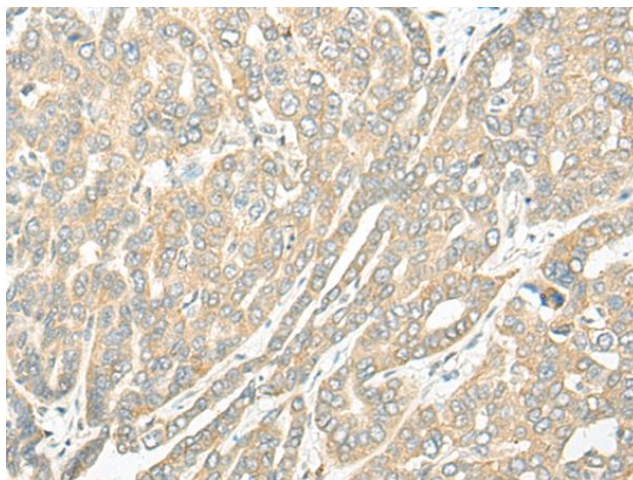
**Buffer System:** pH 7.4 PBS, 0.05% NaN<sub>3</sub>, 40% Glycerol

**Storage:** Store at 4°C short term. Aliquot and store at -20°C long term. Avoid freeze/thaw cycles.

**For Research Use Only:**



Western blot analysis of ROM1 in TM4, 293T, 231 and Hela lysates using ROM1 antibody.



Immunohistochemistry analysis of paraffin-embedded Human liver cancer using ROM1 antibody. High-pressure and temperature Sodium Citrate pH 6.0 was used for antigen retrieval.