



## NAPA Antibody (Rabbit Polyclonal)

E300896

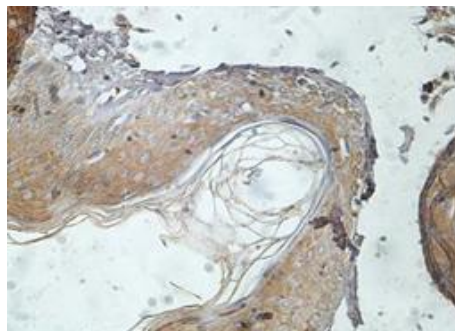
**Product description:**

Formulation: Anti- NAPA antibody purified by peptide affinity column containing 1% BSA and 0.02% NaN<sub>3</sub>  
Catalog No: E300896

Size: 200ul

**Source:**

Rabbit polyclonal NAPA<sup>(1)</sup> antibody was raised against a peptide from the intermediate residues of human NAPA.



Immunohistochemical staining of formalin-fixed paraffin-embedded fetal skin showing membrane staining with anti-NAPA antibody at a dilution of 1/100

**Species Reactivity:**

Reacts with: Human

Predicted: mus, rat

Not yet tested in other species.

**Application:**

For research use only.

ELISA titer: 1:20,000-1:80,000

Western blot analysis: 1:500-1:1,000

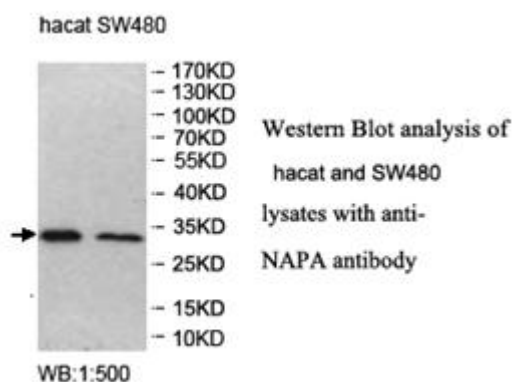
Immunohistochemistry: 1:100-1:500

Optimal dilutions/concentrations should be determined by the end use.

**Dilution instruction and storage:**

Already reconstituted in 200  $\mu$ l sterile H<sub>2</sub>O. The antibody is stable for at least one year when stored at -20° C after reconstitution.

Avoid repeated freeze/thaw cycles.



**For Research Use Only**