



WASF2 Antibody (Rabbit Polyclonal)

E301732

Product description:

Formulation: Anti-WASF2 antibody purified by protein A column containing 0.02% NaN₃

Catalog No.: E301732

Size: 100ug/200ul

Source:

Rabbit polyclonal WASF2⁽¹⁾ antibody was raised against a peptide from the C terminal residues of human WASF2 protein.

Species Reactivity:

Reacts with: Human

Predicted: mus, rat

Not yet tested in other species.

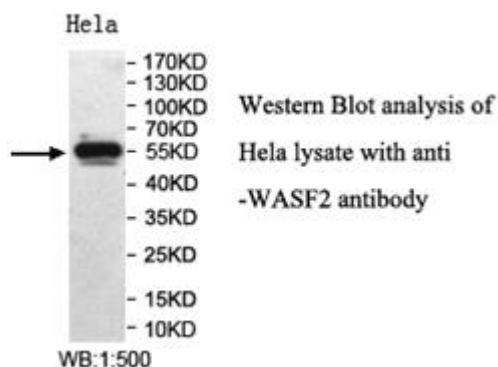
Application:

For research use only.

ELISA titer: 1:20,000-1:80,000

Western blot analysis: 1:500-1:1,000

Optimal dilutions/concentrations should be determined by the end use.



Dilution instruction and storage:

Already reconstituted in 200 µl sterile H₂O. The antibody is stable for at least one year when stored at -20°C after reconstitution.

Avoid repeated freeze/thaw cycles.

For Research Use Only