



## SERPINB4 Antibody (Rabbit Polyclonal)

E307674

**Product description:**

Formulation: Antibody purified by protein affinity column containing 1% BSA and 0.02% NaN<sub>3</sub>

Catalog No.: E307674

Size: 100ug/200ul

**Source:**

Rabbit polyclonal SERPINB4<sup>(1)</sup> antibody was raised against a recombinant human SERPINB4 protein 217-390aa (BC017401).

**Species Reactivity:**

Reacts with: Human

Predicted: rat, mus

Not yet tested in other species.

**Application:**

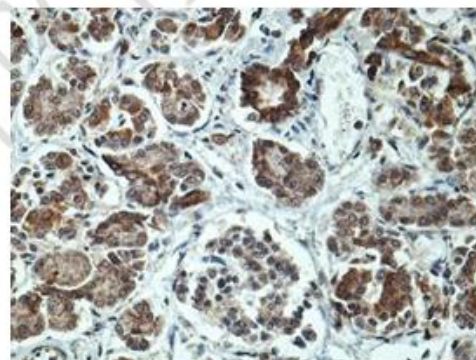
For research use only

ELISA titer: 1:20,000-1:80,000

Western blot analysis: 1:200-1:1,000

Immunohistochemistry: 1:100-1:500

Optimal dilutions/concentrations should be determined by the end use

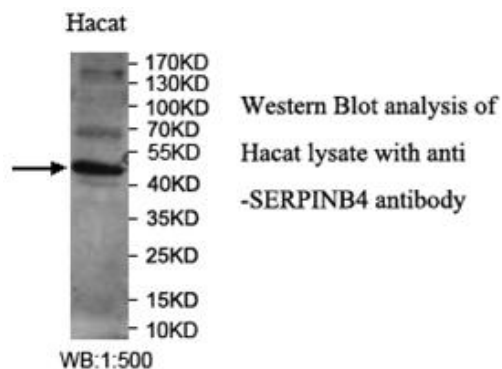


Immunohistochemical staining of formalin-fixed paraffin-embedded fetal pancreas showing cytoplasmic staining with anti-SERPINB4 antibody at a dilution of 1/100

**Dilution instruction and storage:**

Already reconstituted in 200ul sterile H<sub>2</sub>O. The antibody is stable for at least one year when stored at -20°C after reconstitution.

Avoid repeated freeze/thaw cycles.



**For Research Use Only**