



SIRPB1 Antibody (Rabbit Polyclonal)

E308029

Product description:

Formulation: Antibody purified by protein affinity column containing 1% BSA and 0.02% NaN₃

Catalog No.: E308029

Size: 100ug/200ul

Source:

Rabbit polyclonal SIRPB1⁽¹⁾ antibody was raised against a recombinant human SIRPB1 protein 39-154aa (BC025286).

Species Reactivity:

Reacts with: Human

Predicted: rat, mus

Not yet tested in other species.

Application:

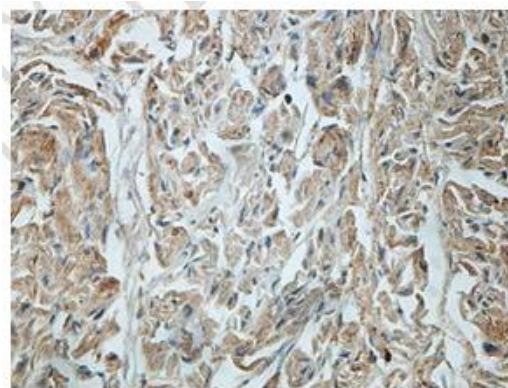
For research use only

ELISA titer: 1:20,000-1:80,000

Western blot analysis: 1:200-1:1,000

Immunohistochemistry: 1:100-1:500

Optimal dilutions/concentrations should be determined by the end use

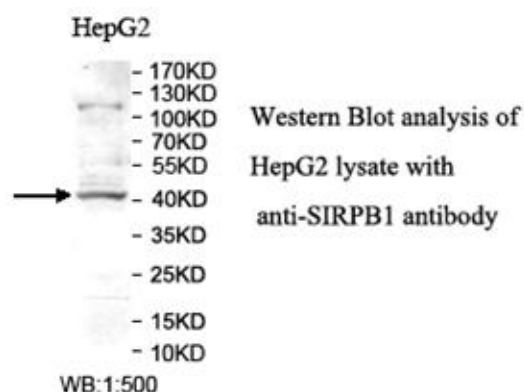


Immunohistochemical staining of formalin-fixed paraffin-embedded fetal heart showing cytoplasmic staining with anti-SIRPB1 antibody at a dilution of 1/100

Dilution instruction and storage:

Already reconstituted in 200ul sterile H₂O. The antibody is stable for at least one year when stored at -20°C after reconstitution.

Avoid repeated freeze/thaw cycles.



For Research Use Only

For Research Use Only