



## UBE2Q2 Antibody (Rabbit Polyclonal)

E308289

### Product description:

Formulation: Antibody purified by protein affinity column containing 1% BSA and 0.02% NaN<sub>3</sub>

Catalog No.: E308289

Size: 100ug/200ul

### Source:

Rabbit polyclonal UBE2Q2 (1) antibody was raised against a recombinant human UBE2Q2 protein 75-300aa (BC017708).

### Species Reactivity:

Reacts with: Human

Predicted: rat, mus

Not yet tested in other species.

### Application:

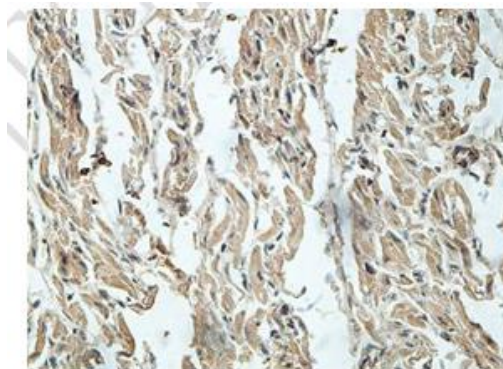
For research use only

ELISA titer: 1:20,000-1:80,000

Western blot analysis: 1:200-1:1,000

Immunohistochemistry: 1:100-1:500

Optimal dilutions/concentrations should be determined by the end use

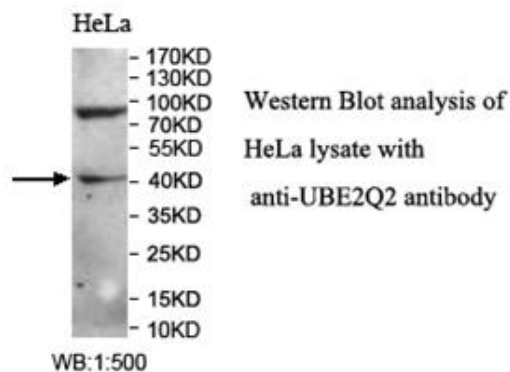


Immunohistochemical staining of formalin-fixed paraffin-embedded fetal heart showing cytoplasmic staining with anti-UBE2Q2 antibody at a dilution of 1/100

### Dilution instruction and storage:

Already reconstituted in 200ul sterile H<sub>2</sub>O. The antibody is stable for at least one year when stored at -20°C after reconstitution.

Avoid repeated freeze/thaw cycles.



**For Research Use Only**

**For Research Use Only**