



## TWIST1 Mouse Monoclonal Antibody

E8EM1710-24

**Catalog Number:** E8EM1710-24

**Amount:** 100ul

**Swiss-Prot No.:** Q15672 (Human) P26687 (Mouse)

**Altername:** bHLHa38, TWIST1, BHLHA38, TWIST

**Storage/Stability:** Store at +4°C after thawing. Aliquot store at -20°C or -80°C. Avoid repeated freeze / thaw cycles.

**Immunogen:** Recombinant protein

**Purification:** ProA affinity purified

**Reactivity:** Human, Mouse

**Application:**WB: 1:500-1:2,000; ICC: 1:50-1:200; IHC-P: 1:100-1:500; FC: 1:100-1:200

**Other Names:** Twist-related protein 1, Class A basic helix-loop-helix protein 38, H-twist

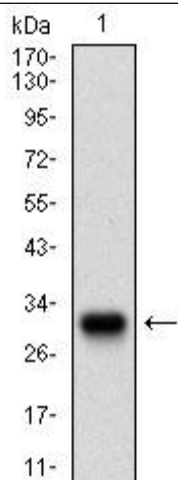
**Source:** Mouse

**Antibody type:** Mouse Monoclonal Antibody

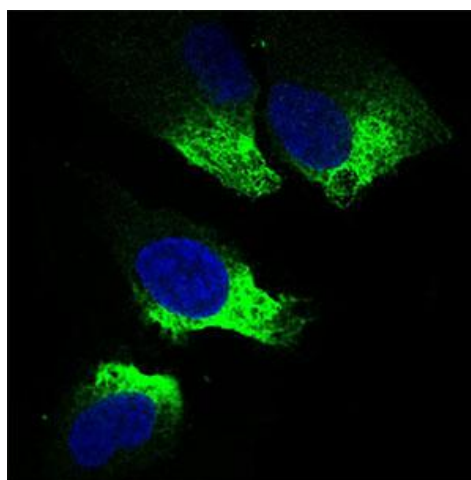
**Isotype:** IgG1

**Preservative:** 1\*TBS (pH7.4), 1%BSA, Preservative: 0.05% Sodium Azide.

**Clone Number:** E6-F4

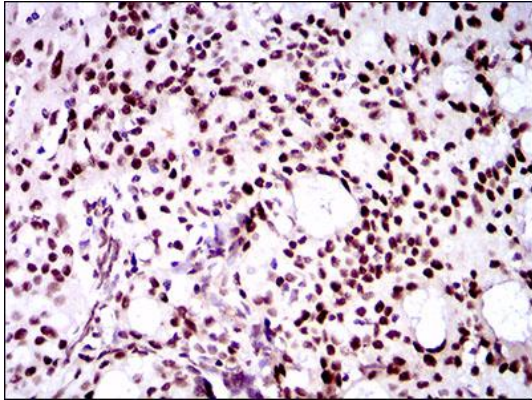
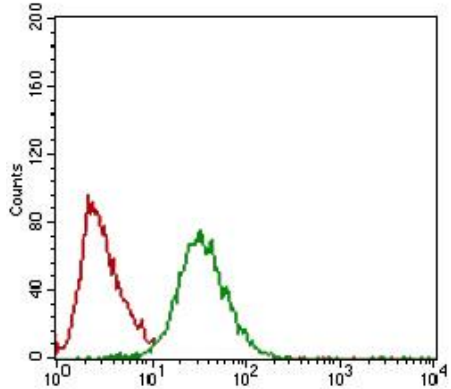


Western blot analysis of TWIST1 on human TWIST1 recombinant protein using anti-TWIST1 antibody at 1/1,000 dilution.



ICC staining TWIST1 (green) in HeLa cells. The nuclear counter stain is DAPI (blue). Cells were fixed in paraformaldehyde,

**For Research Use Only**

 <p>Immunohistochemical analysis of paraffin-embedded cervical cancer tissue using anti-TWIST1 antibody. Counter stained with hematoxylin.</p>	<p>permeabilised with 0.25% Triton X100/PBS.</p>  <p>Flow cytometric analysis of HeLa cells with TWIST1 antibody at 1/100 dilution (green) compared with an unlabelled control (cells without incubation with primary antibody; red).</p>
---	---