



PSMA Antibody

E8RT1518

Product name: PSMA

Molecular Wt: 50/85 kDa

Description: Prostate cancer is the most frequently diagnosed cancer and the early detection of prostate cancer dramatically and efficiently reduces the observed mortality rate. Several proteins have been identified as specific markers of prostate cancer, and they may be useful as diagnostic indicators.

Species reactivity: Human

Tested applications: WB, ICC, FC

Antibody type: Rabbit Polyclonal Antibody

Immunogen: Peptide

Positive control: Human small intestine tissue lysate, HepG2, PC-3M.

Conjugate: Non-conjugated

Alternative names: Cell growth inhibiting protein 27 antibody, Cell growth-inhibiting gene 27 protein antibody, FGCP antibody, Folate hydrolase (prostate-specific membrane antigen) 1 antibody, Folate hydrolase 1 antibody, Folate hydrolase antibody, Folate hydrolase prostate specific membrane antigen 1 antibody, FOLH 1 antibody, FOLH antibody, Folh1 antibody, FOLH1_HUMAN antibody, Folylpoly gamma glutamate carboxypeptidase antibody, Folylpoly-gamma-glutamate carboxypeptidase antibody, GCP 2 antibody, GCP II antibody, GCP2 antibody, GCP II antibody, GIG27 antibody, Glutamate carboxylase II antibody, Glutamate carboxypeptidase 2 antibody; Glutamate carboxypeptidase II antibody, Membrane glutamate carboxypeptidase antibody, mGCP antibody, N acetylated alpha linked acidic dipeptidase 1 antibody

Form: Liquid

Concentration: 1 mg/mL.

Storage instructions: Store at +4°C after thawing. Aliquot store at -20°C or -80°C. Avoid repeated freeze / thaw cycles.

Buffer: 1* TBS (pH 7.4), 0.5% BSA, 50% Glycerol. Preservative: 0.05% Sodium Azide.

For Research Use Only

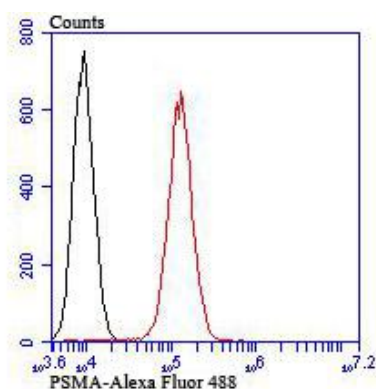
Isotype: IgG

Purity: Peptide affinity purified

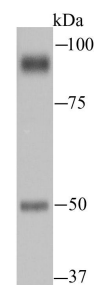
Subcellular location: Cytoplasm. Cell membrane.

Database links: Q04609(Human)

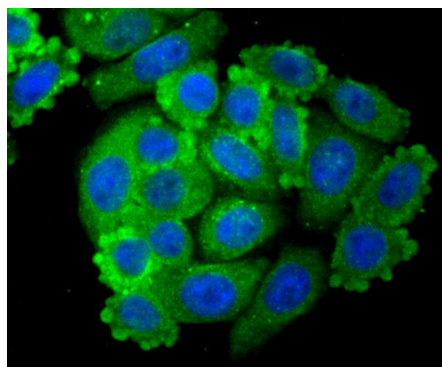
Applications: WB: 1:500-1:1,000; ICC: 1:50-1:200; FC: 1:50-1:100



Flow cytometric analysis of HepG2 cells with PSMA antibody at 1/100 dilution (red) compared with an unlabelled control (cells without incubation with primary antibody; black).



Western blot analysis of PSMA on human small intestine tissue lysate using anti-PSMA antibody at 1/1,000 dilution.



ICC staining PSMA in HepG2 cells (green). The nuclear counter stain is DAPI (blue). Cells were fixed in paraformaldehyde, permeabilised with 0.25% Triton X100/PBS.