



Smad3 (phospho-Ser425) Antibody

E8RT1568

Product name:E8RT1568

Gene Name:SMAD3

Protein Name:Mothers against decapentaplegic homolog 3

Source:Rabbit

Immunogen:Synthesized peptide derived from human Smad3 around the phosphorylation site of S425.

Purification:The antibody was affinity-purified from rabbit antiserum by affinity-chromatography using epitope-specific immunogen.

Specificity:Phospho-Smad3 (S425) Polyclonal Antibody detects endogenous levels of Smad3 protein only when phosphorylated at S425.

Formulation:Liquid in PBS containing 50% glycerol, 0.5% BSA and 0.02% sodium azide.

Concentration:1 mg/ml

Storage / Stability:-20°C/1 year

Human Gene ID:4088

Human Swiss-Prot No.:P84022

Mouse Gene ID:17127

Mouse Swiss-Prot No.:Q8BUN5

Rat Gene ID:25631

Rat Swiss-Prot No.:P84025

Reactivity:Human,Mouse,Rat

Applications:WB,IHC-p,ELISA

Signal Pathway:Angiogenesis; Wnt/ β -Catenin; Cell Cycle

Predicted band (Da):48081

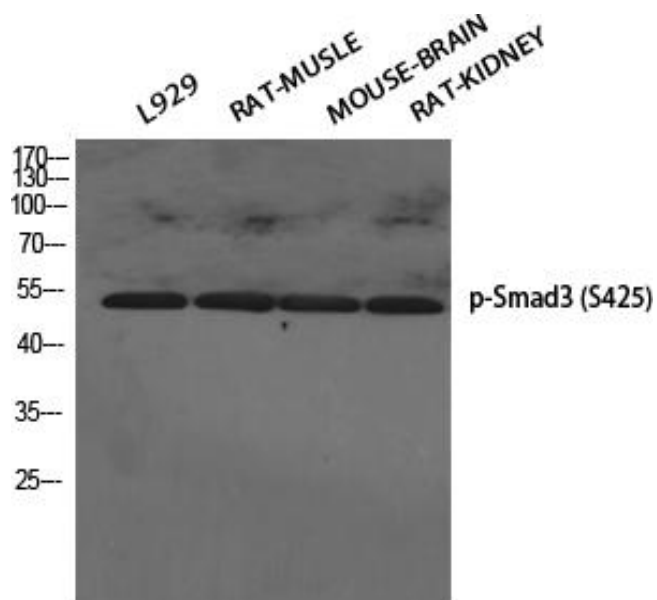
Observed band (kDa):58

Dilution:Western Blot: 1/500 - 1/2000. Immunohistochemistry: 1/100 - 1/300. ELISA: 1/40000. Not yet tested in other applications.

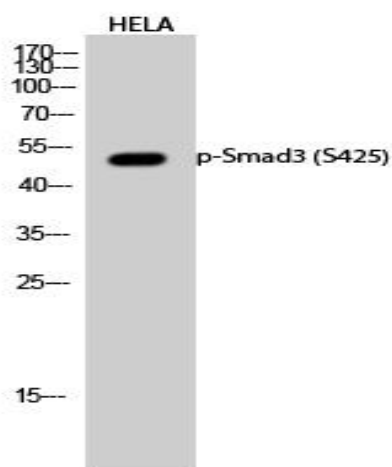
Other_names:SMAD3; MADH3; Mothers against decapentaplegic homolog 3; MAD homolog 3; Mad3;

For Research Use Only

Mothers against DPP homolog 3; hMAD-3; JV15-2; SMAD family member 3; SMAD 3; Smad3; hSMAD3



Western Blot analysis of various cells using Phospho-Smad3 Polyclonal Antibody diluted at 1: 500.



Western Blot analysis of HELA cells using Phospho-Smad3 Polyclonal Antibody diluted at 1: 500.

For Research Use Only