



## MSH2 Polyclonal Antibody

E90064a

**Catalog Number:**E90064a

**Amount:**100ul

**Gene ID:**4436

**SwissProt ID:**P43246

**Gene Name:**MSH2

**Alternative Names:**DNA mismatch repair protein Msh2; MutS protein homolog 2

**Background:**MSH2 (MutS homologue 2) forms the hMutS- $\alpha$  dimer with MSH6 and is an essential component of the mismatch repair process. hMutS- $\alpha$  is part of the BRCA1-associated surveillance complex (BASC), a complex that also contains BRCA1, MLH1, ATM, BLM, PMS2 proteins and the Rad50-Mre11-NBS1 complex.

**Research Field:**Epigenetics and Nuclear Signaling

**Product Categories:**Primary antibody

**Host:**Rabbit

**Reactivity:**Human,Mouse

**Application:**WB,IHC-P

**Dilution Ratio:**WB: 1/500-1/1000 IHC: 1/50-1/100

**Molecular Weight:**Calculated MW: 105 kDa; Observed MW: 105 kDa

**Clonality:**Polyclonal Antibody

**Isotype:**IgG

**Immunogen:**Synthetic peptide of human MSH2

**Purification:**Affinity Purified

**Conjugation:**Unconjugated

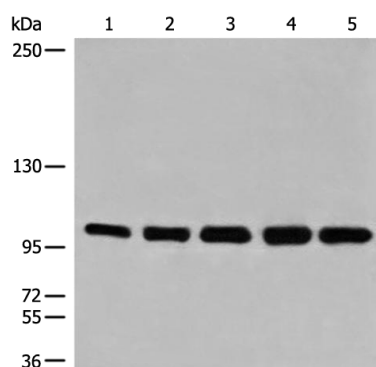
**Modification:**Unmodified

**Form:**Liquid

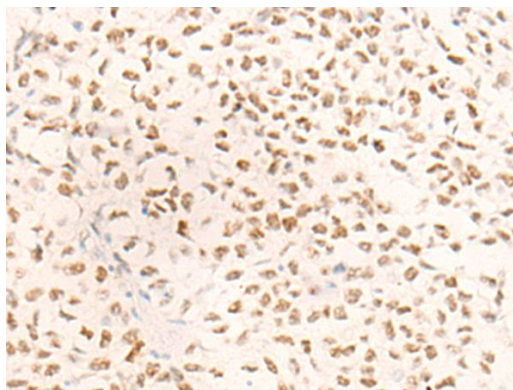
**Buffer System:**pH 7.4 PBS, 0.05% NaN<sub>3</sub>, 40% Glycerol

**Storage:**Store at 4°C short term. Aliquot and store at -20°C long term. Avoid freeze/thaw cycles.

**For Research Use Only**



Western blot analysis of MSH2 in A172 (lane 1), Hela (lane 2), SKOV-3 (lane 3), 293T (lane 4) and HEPG2 (lane 5) lysates using MSH2 antibody.



Immunohistochemistry analysis of paraffin-embedded Human ovarian cancer using MSH2 antibody. High-pressure and temperature Sodium Citrate pH 6.0 was used for antigen retrieval.