



## Mouse anti-Human CD45RO, FITC Conjugated mAb

**E16HF0456**

<b><u>Catalog No.</u></b>	<b><u>Size</u></b>
E16HF0456-100	100 Tests
E16HF0456-050	50 Tests

**Description:**

4AUCHL1 reacts with an isoform of CD45, a 180 kDa molecule clustered as CD45RO. CD45RO is expressed on memory/activated T cells and cortical thymocytes, in comparison with CD45RA, which is expressed on naive/resting T cells and on medullary thymocytes. CD45RO and CD45RA molecules are important to discriminate naive and memory T cells in the study of the immune system.

<b>Storage Condition:</b>	Store at 4°C. DO NOT FREEZE. LIGHT SENSITIVE MATERIAL.
<b>Clone:</b>	4AUCHL1
<b>Isotype:</b>	Mouse IgG2a
<b>Reactivity:</b>	Human, Not yet tested in other species.
<b>Vol.per.Test:</b>	10 µl/Test
<b>Storage Buffer:</b>	Phosphate-buffered solution, pH 7.4, containing 0.09% sodium azide and 0.2% (w/v) BSA
<b>Applications:</b>	FCM IF

**Experimental Methods:**

1. Take 100µl peripheral blood anticoagulated by EDTA and add to the bottom of 5ml tube;
2. Add 10µl labeled antibody to the bottom of flow tube mixing with the whole blood, incubate for 20 minutes at room temperature away from light;
3. Add 2 ml 1×RBC lysis buffer, incubate for 10 minutes away from light after mixing, dissolve red blood cells (recommended: RBC lysing Solution 10×, Cat.: E16XP001);
4. Sample tube is set to 1000 rpm centrifugation for 5 minutes, discard the supernatant;
5. Add 2 ml PBS wash buffer to resuspend the cells, then 1000 rpm centrifugation for 5 minutes, discard the supernatant;
6. Add 0.5 ml PBS wash buffer to resuspend the cells and detect by flow cytometry (sample should be determined on the day on the machine and can also be added fixation overnight at 4 °C then measured).

[PBS wash buffer: PBS +1% FBS +0.1% NaN<sub>3</sub>; Cat.: E16XP005]

[Cell fixation: 2% formaldehyde solution]

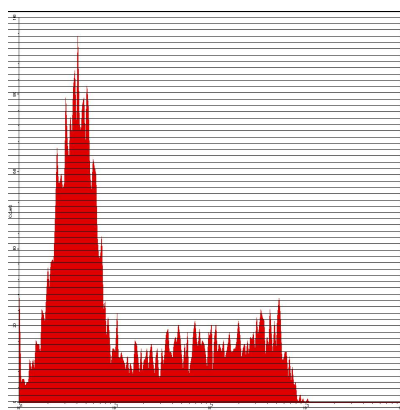
**Notices:**

1. This reagent has been pre-diluted for use at the recommended Volume per Test.  
We typically use 1 X 10<sup>6</sup> cells in a 100µl experimental sample (a test);

**For Research Use Only**

2. Since applications vary, each investigator should titrate the reagent to obtain optimal results.
3. **Caution:** Sodium azide yields highly toxic hydrazoic acid under acidic conditions. Dilute azide compounds in running water before discarding to avoid accumulation of potentially explosive deposits in plumbing;
4. If the sample can not be timely analysis, please fixed;
5. **For research use only, not for diagnostic or therapeutic use.**

#### Profile of peripheral blood lymphocytes analyzed by flow cytometry



Human peripheral blood lymphocytes analyzed with FITC CD45RO mAb

#### References

1. Knapp, W et al., eds. (1989) Leucocyte Typing IV : White Cell Differentiation Antigens, Oxford University Press, New York.
2. Trowbridge, IS and Thomas, ML. (1993) Annu. Rev. Immunol. 12: 85.
3. Pulido, R et al., (1988) J. Immunol. 140:3851.
4. Smith, SH et al., (1986) Immunology 58:63.

#### Related products:

Catalog No.	Product name	Applications
E16HU0456	Mouse Anti-Human CD45RO, Purified mAb	FCM IF
E16HP0456	Mouse Anti-Human CD45RO, PE Conjugated mAb	FCM IF
E16HC0456	Mouse Anti-Human CD45RO, PE-Cy5 Conjugated mAb	FCM IF

**For Research Use Only**