

## DATASHEET

Version: 2016-08-17

### EGFR Antibody (Phospho-Tyr<sup>869</sup>), pAb, Rabbit

**Cat. No.:** A00271-100

**Size:** 100 µg

**Synonyms:** Anti EGFR (Phospho-Tyr<sup>869</sup>); Anti EGFR

**Description:**

none

**Immunogen:** Synthesized phosphopeptide derived from human EGFR around the phosphorylation site of tyrosine 869 (K-E-Y<sup>P</sup>-H-A)

**Host:** Rabbit

**Antigen Synonyms:** Human

**Conjugation:** Unconjugated

**Predicated Band Size:**

175 kD

**Observed Band Size:**

175 kD

**Formulation:**

1 mg/ml in phosphate buffered saline (without Mg<sup>2+</sup> and Ca<sup>2+</sup>), pH 7.4, 150 mM NaCl, 0.02% sodium azide, and 50% glycerol

**Ig Subclass:** Rabbit IgG

**Specificity:** GenScript Rabbit Anti-EGFR (Phospho-Tyr<sup>869</sup>) Polyclonal Antibody detects endogenous levels of EGFR only when phosphorylated at tyrosine 869.

**Purification:** The antibody is affinity-purified from rabbit antiserum by affinity chromatography using epitope-specific phosphopeptide. The antibody against non-phosphopeptide is removed by chromatography using non-phosphopeptide corresponding to the phosphorylation site.

**Applications:**

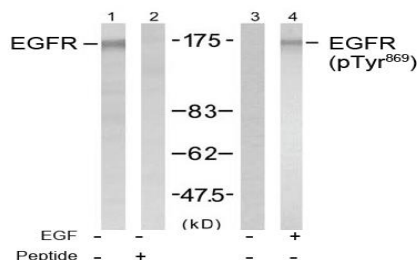
**WB:** 1:500-1:1,000

**Species Reactivity:** Human, mouse, rat

**Storage:**

Store at -20°C/1 year.

### Example



Western blot analysis of extract from A431 cells untreated or treated with EGF (200 ng/ml, 5 min), using Rabbit Anti-EGFR (Ab-869) Polyclonal Antibody (GenScript, A00577, lane 1 and 2) and Rabbit Anti-EGFR (Phospho-Tyr<sup>869</sup>) Polyclonal Antibody (GenScript, A00271, lane 3 and 4)