

## DATASHEET

Version: 2016-08-17

### Ezrin Antibody (Phospho-Tyr<sup>353</sup>), pAb, Rabbit

**Cat. No.:** A00291-100

**Size:** 100 µg

**Synonyms:** Anti Ezrin (Phospho-Tyr<sup>353</sup>);

**Description:**

none

**Immunogen:** Synthesized phosphopeptide derived from human Ezrin around the phosphorylation site of tyrosine 353 (Q-D-Y<sup>P</sup>-E-E)

**Host:** Rabbit

**Antigen Synonyms:** Human

**Conjugation:** Unconjugated

**Predicated Band Size:**

81 kD

**Observed Band Size:**

81 kD

**Formulation:**

1 mg/ml in phosphate buffered saline (without Mg<sup>2+</sup> and Ca<sup>2+</sup>), pH7.4, 150 mM NaCl, 0.02% sodium azide, and 50% glycerol

**Ig Subclass:** Rabbit IgG

**Specificity:** GenScript Rabbit Anti-Ezrin (Phospho-Tyr<sup>353</sup>) Polyclonal Antibody detects endogenous levels of Ezrin only when phosphorylated at tyrosine 353.

**Purification:** The antibody is affinity-purified from rabbit antiserum by affinity chromatography using epitope-specific phosphopeptide. The antibody against non-phosphopeptide is removed by chromatography using non-phosphopeptide corresponding to the phosphorylation site.

**Applications:**

**WB:** 1:500-1:1,000

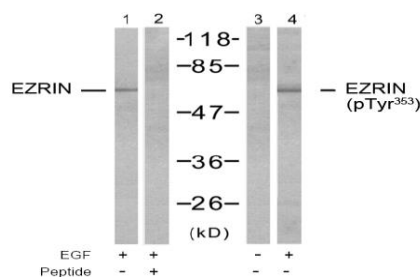
**IHC:** 1:50-1:100

**Species Reactivity:** Human,mouse

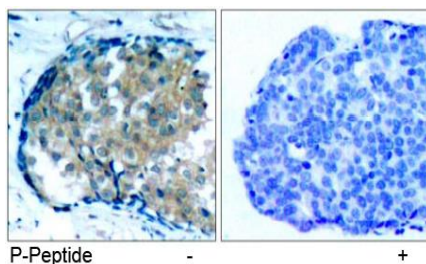
**Storage:**

Store at -20°C/1 year.

### Example



Western blot analysis of extract from A431 cells, untreated or EGF-treated (200 ng/ml, 30 min) using Rabbit Anti-Ezrin (Ab-353) Polyclonal Antibody (GenScript, A00392, lane 1 and 2) and Rabbit Anti-Ezrin (Phospho-Tyr<sup>353</sup>) Polyclonal Antibody (GenScript, A00291, lane 3 and 4)



Immunohistochemical analysis of paraffin-embedded human breast carcinoma tissue, using Rabbit Anti-Ezrin (Phospho-Tyr<sup>353</sup>) Polyclonal Antibody (GenScript, A00291)