

## DATASHEET

Version: 2016-08-17

### PTEN Antibody (Ab-380, 382, 383), pAb, Rabbit

**Cat. No.:** A00302-100

**Size:** 100 µg

**Synonyms:** Rabbit Anti PTEN; Anti PTEN

**Description:**

none

**Immunogen:** Synthesized non-phosphopeptide derived from human PTEN around the phosphorylation site of serine 380 and threonine 382, 383 (R-Y-S<sup>P</sup>-D-T<sup>P</sup>-T<sup>P</sup>-D-S)

**Host:** Rabbit

**Antigen Synonyms:** Human

**Conjugation:** Unconjugated

**Predicated Band Size:**

54 kD

**Observed Band Size:**

54 kD

**Formulation:**

1 mg/ml in phosphate buffered saline (without Mg<sup>2+</sup> and Ca<sup>2+</sup>),

pH 7.4, 150 mM NaCl, 0.02% sodium azide, and 50% glycerol

**Ig Subclass:** Rabbit IgG

**Specificity:** GenScript Rabbit Anti-PTEN (Ab-380, 382, 383) Polyclonal Antibody detects endogenous levels of total PTEN protein.

**Purification:** GenScript Rabbit Anti-PTEN (Ab-380, 382, 383) Polyclonal Antibody is affinity-purified from rabbit antiserum by affinity chromatography using epitope-specific immunogen.

**Applications:**

**WB:** 1:500-1:1,000

**IHC:** 1:50-1:100

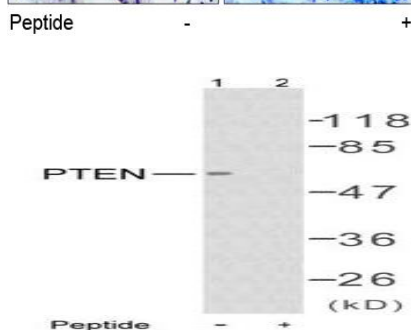
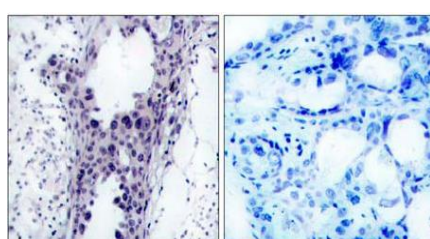
**Species Reactivity:** Human, mouse, rat

**Storage:**

GenScript Rabbit Anti-PTEN (Ab-380, 382, 383) Polyclonal Antibody remains stable for 2-3 weeks if stored at 2-8°C.

Aliquot and store at -20°C or below for longer periods. Avoid repeated freezing and thawing cycles.

### Example



Immunohistochemical analysis of paraffin-embedded human breast carcinoma tissue using Rabbit Anti-PTEN (Ab-380, 382, 383) Polyclonal Antibody (GenScript, A00302)

Western blot analysis of extract from HT29 cells using Rabbit Anti-PTEN (Ab-380, 382, 383) Polyclonal Antibody (GenScript, A00302)