

DATASHEET

Version: 2016-08-17

Progesterone Receptor Antibody (Phospho-Ser¹⁹⁰), pAb, Rabbit

Cat. No.: A00312-100

Size: 100 µg

Synonyms: Anti Progesterone Receptor (Phospho-Ser¹⁹⁰);

Description:

none

Immunogen: Synthesized phosphopeptide derived from human Progesterone Receptor around the phosphorylation site of serine 190 (G-L-S^P-P-A).

Host: Rabbit

Antigen Synonyms: Human

Conjugation: Unconjugated

Predicated Band Size:

99 kD

Observed Band Size:

99 kD

Formulation:

1 mg/ml in phosphate buffered saline (without Mg²⁺ and Ca²⁺), pH 7.4, 150 mM NaCl, 0.02% sodium azide, and 50% glycerol

Ig Subclass: Rabbit IgG

Specificity: Rabbit Anti Progesterone Receptor (Phospho-Ser¹⁹⁰) detects endogenous levels of Progesterone Receptor only when phosphorylated at serine 190.

Purification: The antibody is affinity-purified from rabbit antiserum by affinity chromatography using epitope-specific phosphopeptide. The antibody against non-phosphopeptide is removed by chromatography using non-phosphopeptide corresponding to the phosphorylation site.

Applications:

WB: 1:500-1:1,000

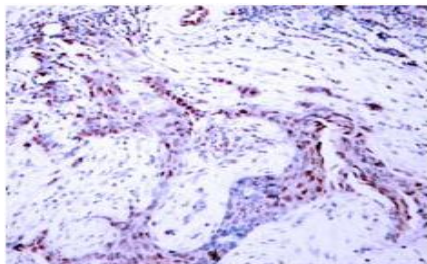
IHC: 1:50-1:100

Species Reactivity: Human

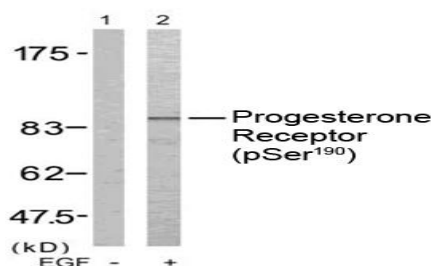
Storage:

Store at -20°C/1 year.

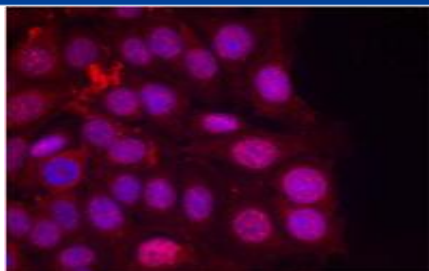
Example



Immunohistochemical analysis of paraffin-embedded human breast carcinoma tissue, using Rabbit Anti-Progesterone Receptor (Phospho-Ser¹⁹⁰) Polyclonal Antibody (GenScript, A00312)



Western blot analysis of extract from COS 7 cells treated with EGF using Rabbit Anti-Progesterone Receptor (Phospho-Ser¹⁹⁰) Polyclonal Antibody (GenScript, A00312)



Immunofluorescence staining of methanol-fixed MCF7 cells using Rabbit Anti-Progesterone Receptor (Phospho-Ser¹⁹⁰) Polyclonal Antibody (GenScript, A00312)