

## DATASHEET

Version: 2016-08-17

### HER2 Antibody (Phospho-Tyr<sup>1248</sup>), pAb, Rabbit

**Cat. No.:** A00318-100

**Size:** 100 µg

**Synonyms:** Anti-HER2 (Phospho-Tyr<sup>1248</sup>);

**Description:**

none

**Immunogen:** Synthesized phosphopeptide derived from human HER2 around the phosphorylation site of tyrosine 1248 (P-E-Y<sup>P</sup>-L-G)

**Host:** Rabbit

**Antigen Synonyms:** Human

**Conjugation:** Unconjugated

**Predicated Band Size:**

185 kD

**Observed Band Size:**

185 kD

**Formulation:**

1 mg/ml in phosphate buffered saline (without Mg<sup>2+</sup> and Ca<sup>2+</sup>), pH 7.4, 150 mM NaCl, 0.02% sodium azide, and 50% glycerol

**Ig Subclass:** Rabbit IgG

**Specificity:** Genscript Rabbit Anti-HER2 (Phospho-Tyr<sup>1248</sup>) Polyclonal Antibody detects endogenous levels of HER2 only when phosphorylated at tyrosine1248.

**Purification:** The antibody is affinity-purified from rabbit antiserum by affinity chromatography using epitope-specific phosphopeptide. The antibody against non-phosphopeptide is removed by chromatography using non-phosphopeptide corresponding to the phosphorylation site.

**Applications:**

**Western blot:** 1:500-1:1,000

**IHC:** 1:50-1:100

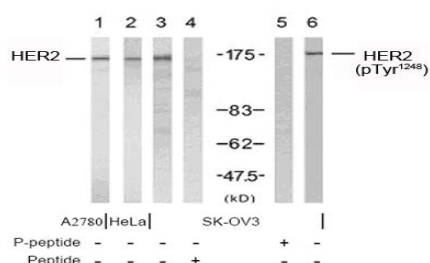
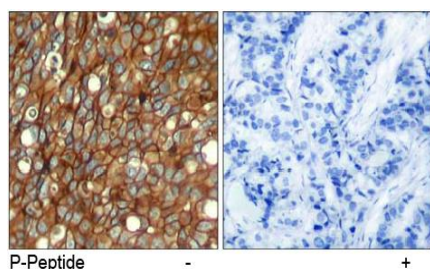
**IF:** 1:100-1:200

**Species Reactivity:** Human,mouse,rat

**Storage:**

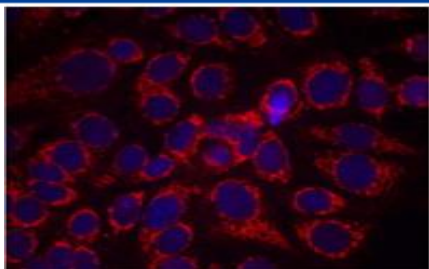
Store at -20°C/1 year.

### Example



Immunohistochemical analysis of paraffin-embedded human breast carcinoma tissue using Rabbit Anti-HER2 (Phospho-Tyr<sup>1248</sup>) Polyclonal Antibody (GenScript, A00318)

Western blot analysis using Rabbit Anti-HER2 (Ab-1248) Polyclonal Antibody (GenScript, A00331, lane 1, 2, 3, and 4) and Rabbit Anti-HER2 (Phospho-Tyr<sup>1248</sup>) Polyclonal Antibody (GenScript, A00318, lane 5 and 6)



Immunofluorescence staining of methanol-fixed MCF7 cells using Rabbit Anti-HER2 (Phospho-Tyr<sup>1248</sup>) Polyclonal Antibody (GenScript, A00318, Red)