

## DATASHEET

Version: 2016-08-17

### EGFR Antibody (Phospho-Ser<sup>1070</sup>), pAb, Rabbit

**Cat. No.:** A00320-100

**Size:** 100 µg

**Synonyms:** Anti EGFR (Phospho-Ser<sup>1070</sup>);

**Description:**

none

**Immunogen:** Synthesized phosphopeptide derived from human EGFR around the phosphorylation site of serine 1070 (R-Y-S<sup>P</sup>-S-D)

**Host:** Rabbit

**Antigen Synonyms:** Human

**Conjugation:** Unconjugated

**Predicated Band Size:**

175 kD

**Observed Band Size:**

175 kD

**Formulation:**

1 mg/ml in phosphate buffered saline (without Mg<sup>2+</sup> and Ca<sup>2+</sup>), pH 7.4, 150 mM NaCl, 0.02% sodium azide, and 50% glycerol

**Ig Subclass:** Rabbit IgG

**Specificity:** GenScript Rabbit Anti-EGFR (Phospho-Ser<sup>1070</sup>) Polyclonal Antibody detects endogenous levels of EGFR only when phosphorylated at serine 1070.

**Purification:** The antibody is affinity-purified from rabbit antiserum by affinity chromatography using epitope-specific phosphopeptide. The antibody against non-phosphopeptide is removed by chromatography using non-phosphopeptide corresponding to the phosphorylation site.

**Applications:**

**Western blot:** 1:500-1:1,000

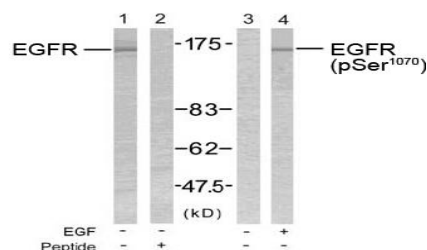
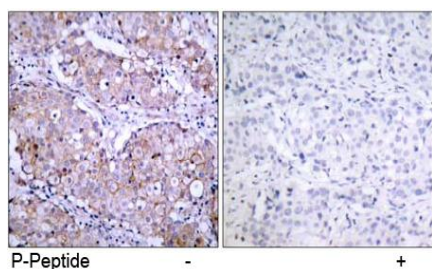
**IHC:** 1:50-1:100

**Species Reactivity:** Human,mouse,rat

**Storage:**

Store at -20°C/1 year.

### Example



Immunohistochemical analysis of paraffin-embedded human breast carcinoma tissue using Rabbit Anti-EGFR (Phospho-Ser<sup>1070</sup>) Polyclonal Antibody (GenScript, A00320)

Western blot analysis of extract from SK-OV3 cells untreated or treated with EGF using Rabbit Anti-EGFR (Ab-1070) Polyclonal Antibody (GenScript, A00344, lane 1 and 2) and Rabbit Anti-EGFR (Phospho-Ser<sup>1070</sup>) Polyclonal Antibody (GenScript, A00320, lane 3 and 4)