

DATASHEET

Version: 2016-08-17

Stathmin 1 Antibody (Phospho-Ser³⁸), pAb, Rabbit

Cat. No.: A00324-100

Size: 100 µg

Synonyms: Anti Stathmin 1 (Phospho-Ser³⁸);

Description:

none

Immunogen: Synthesized phosphopeptide derived from human Stathmin 1 around the phosphorylation site of serine 38 (P-L-S^P-P-P).

Host: Rabbit

Antigen Synonyms: Human

Conjugation: Unconjugated

Predicated Band Size:

19 kD

Observed Band Size:

19 kD

Formulation:

1 mg/ml in phosphate buffered saline (without Mg²⁺ and Ca²⁺), pH 7.4, 150 mM NaCl, 0.02% sodium azide and 50% glycerol

Ig Subclass: Rabbit IgG

Specificity: GenScript Rabbit Anti-Stathmin 1 (Phospho-Ser³⁸) Polyclonal Antibody detects endogenous levels of Stathmin 1 only when phosphorylated at serine 38.

Purification: The antibody was affinity-purified from rabbit antiserum by affinity-chromatography using epitope-specific phosphopeptide. The antibody against non-phosphopeptide was removed by chromatography using non-phosphopeptide corresponding to the phosphorylation site.

Applications:

Western blot: 1:500-1:1,000

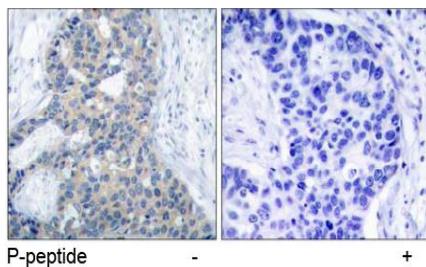
IHC: 1:50-1:100

Species Reactivity: Human, mouse, rat

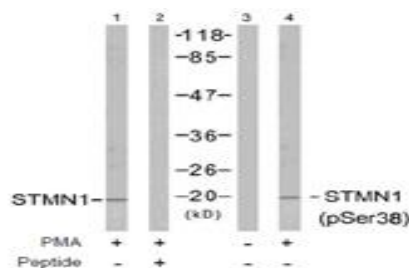
Storage:

Store at -20°C/1 year

Example



Immunohistochemical analysis of paraffin-embedded human breast carcinoma tissue using Rabbit Anti-Stathmin 1 (Phospho-Ser³⁸) Polyclonal Antibody (GenScript, A00324)



Western blot analysis of extract from Jurkat cells untreated or treated with PMA (1 ng/ml, 15 min), using Rabbit Anti-Stathmin 1 (Ab-38) Polyclonal Antibody (GenScript, A00463, lane 1 and 2) and Rabbit Anti-Stathmin 1 (Phospho-Ser³⁸) Polyclonal Antibody (GenScript, A00324, lane 3 and 4)