

## DATASHEET

Version: 2016-08-17

### STAT1 Antibody (Phospho-Ser<sup>727</sup>), pAb, Rabbit

**Cat. No.:** A00347-100

**Size:** 100 µg

**Synonyms:** Anti STAT1 (Phospho-Ser<sup>727</sup>);

**Description:**

none

**Immunogen:** Synthesized phosphopeptide derived from human STAT1 around the phosphorylation site of serine 727 (P-M-S<sup>P</sup>-P-E)

**Host:** Rabbit

**Antigen Synonyms:** Human

**Conjugation:** Unconjugated

**Predicated Band Size:**

91 kD

**Observed Band Size:**

91 kD

**Formulation:**

1 mg/ml in phosphate buffered saline (without Mg<sup>2+</sup> and Ca<sup>2+</sup>),

pH 7.4, 150 mM NaCl, 0.02% sodium azide, and 50% glycerol

**Ig Subclass:** Rabbit IgG

**Specificity:** GenScript Rabbit Anti-STAT1 (Phospho-Ser<sup>727</sup>) Polyclonal Antibody detects endogenous levels of STAT1 only when phosphorylated at serine 727.

**Purification:** GenScript Rabbit Anti-STAT1 (Phospho-Ser<sup>727</sup>) Polyclonal Antibody is affinity-purified from rabbit antiserum by affinity chromatography using epitope-specific phosphopeptide. The antibody against non-phosphopeptide is removed by chromatography using non-phosphopeptide corresponding to the phosphorylation site.

**Applications:**

**WB:** 1:500-1:1,000

**IHC:** 1:50-1:100

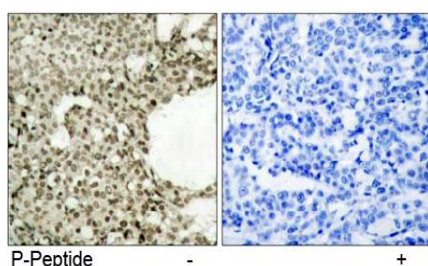
**IF:** 1:100-1:200

**Species Reactivity:** Human, mouse, rat

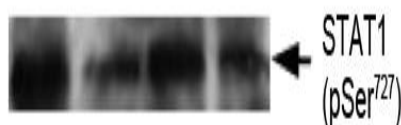
**Storage:**

Store at -20°C/1 year.

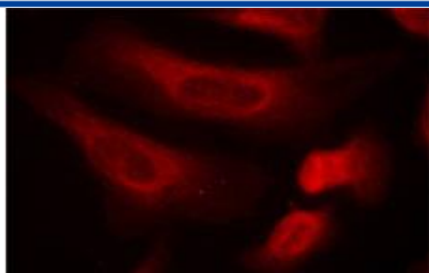
### Example



Immunohistochemical analysis of paraffin-embedded human breast carcinoma tissue using Rabbit Anti-STAT1 (Phospho-Ser<sup>727</sup>) Polyclonal Antibody (GenScript, A00347)



Western blot analysis of extract from thyroid cancer cell line Bph cells, using Rabbit Anti-STAT1 (Phospho-Ser<sup>727</sup>) Polyclonal Antibody (GenScript, A00347)



Immunofluorescence staining of methanol-fixed HeLa cells using Rabbit Anti-STAT1 (Phospho-Ser<sup>727</sup>) Polyclonal Antibody (GenScript, A00347, Red)