

DATASHEET

Version: 2016-08-17

FKHR Antibody (Phospho-Ser³¹⁹), pAb, Rabbit

Cat. No.: A00373-100

Size: 100 µg

Synonyms: Anti FKHR (Phospho-Ser³¹⁹);

Description:

none

Immunogen: Synthesized phosphopeptide derived from human FKHR around the phosphorylation site of serine 319 (T-S-S^P-N-A)

Host: Rabbit

Antigen Synonyms: Human

Conjugation: Unconjugated

Predicated Band Size:

78-82 kD

Observed Band Size:

78-82 kD

Formulation:

1 mg/ml in phosphate buffered saline (without Mg²⁺ and Ca²⁺), pH 7.4, 150 mM NaCl, 0.02% sodium azide, and 50% glycerol

Ig Subclass: Rabbit IgG

Specificity: GenScript Rabbit Anti-FKHR (Phospho-Ser³¹⁹) Polyclonal Antibody detects endogenous levels of FKHR only when phosphorylated at serine 319.

Purification: The antibody is affinity-purified from rabbit antiserum by affinity chromatography using epitope-specific phosphopeptide. The antibody against non-phosphopeptide is removed by chromatography using non-phosphopeptide corresponding to the phosphorylation site.

Applications:

Western blot: 1:500-1:1,000

IHC: 1:50-1:100

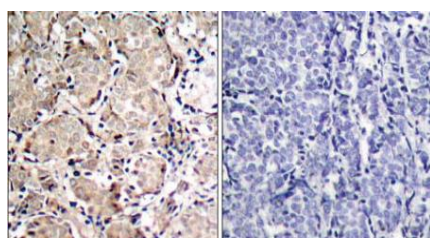
IF: 1:100-1:200

Species Reactivity: Human, mouse, rat

Storage:

Store at -20°C/1 year

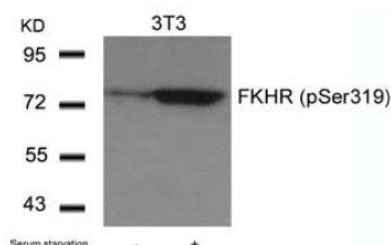
Example



P-Peptide

-

+



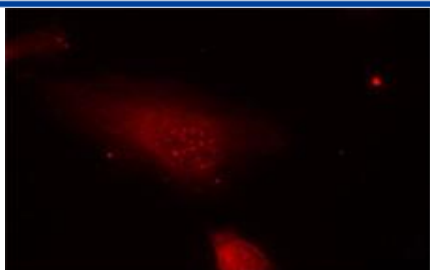
Serum starvation

-

+

Immunohistochemical analysis of paraffin-embedded human breast carcinoma tissue using Rabbit Anti-FKHR (Phospho-Ser³¹⁹) Polyclonal Antibody (GenScript, A00373)

Western blot analysis of extracts from 3T3 cells untreated or treated with serum starvation using Rabbit Anti-FKHR (Phospho-Ser³¹⁹) Polyclonal Antibody (GenScript, A00373).



Immunofluorescence staining of methanol-fixed HeLa cells using Rabbit Anti-FKHR (Phospho-Ser³¹⁹) Polyclonal Antibody (GenScript, A00373, Red)