

## DATASHEET

Version: 2016-08-17

### SMC1 Antibody (Ab-957), pAb, Rabbit

**Cat. No.:** A00455-100

**Size:** 100 µg

**Synonyms:** Rabbit Anti SMC1; Anti SMC1

**Description:**

none

**Immunogen:** Synthesized non-phosphopeptide derived from human SMC1 around the phosphorylation site of serine 957 (G-S-S<sup>P</sup>-Q-G)

**Host:** Rabbit

**Antigen Synonyms:** Human

**Conjugation:** Unconjugated

**Predicated Band Size:**

145 kD

**Observed Band Size:**

145 kD

**Formulation:**

1 mg/ml in phosphate buffered saline (without Mg<sup>2+</sup> and Ca<sup>2+</sup>), pH 7.4, 150 mM NaCl, 0.02% sodium azide, and 50% glycerol

**Ig Subclass:** Rabbit IgG

**Specificity:** GenScript Rabbit Anti-SMC1 (Ab-957)

Polyclonal Antibody detects endogenous levels of total SMC1 protein.

**Purification:** The antibody is affinity-purified from rabbit antiserum by affinity chromatography using epitope-specific immunogen.

**Applications:**

**WB:** 1:500-1:1,000

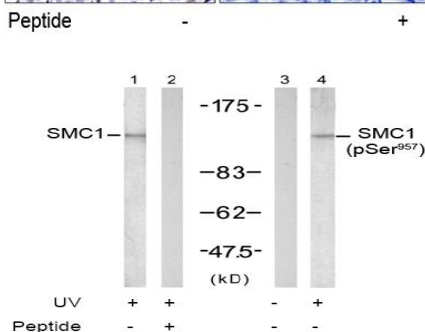
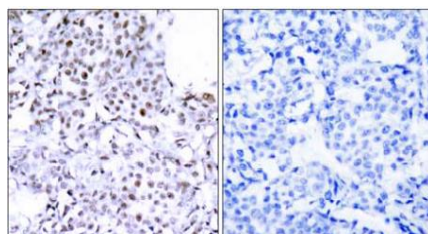
**IHC:** 1:50-1:100

**Species Reactivity:** Human, mouse

**Storage:**

Store at -20°C/1 year.

### Example



Immunohistochemical analysis of paraffin-embedded human breast carcinoma tissue using Rabbit Anti-SMC1 (Ab-957) Polyclonal Antibody (GenScript, A00455)

Western blot analysis of extract from K562 cells, untreated or treated with UV (20 min), using Rabbit Anti-SMC1 (Ab-957) Polyclonal Antibody (GenScript, A00455, lane 1 and 2) and Rabbit Anti-SMC1 (Phospho-Ser<sup>957</sup>) Polyclonal Antibody (GenScript, A00336, lane 3 and 4)