

DATASHEET

Version: 2016-08-17

IRS-1 Antibody (Phospho-Ser⁶³⁶), pAb, Rabbit

Cat. No.: A00503-100

Size: 100 µg

Synonyms: Anti IRS-1 (Phospho-Ser⁶³⁶); Anti IRS-1

Description:

none

Immunogen: Synthesized phosphopeptide derived from human IRS-1 around the phosphorylation site of serine 636 (P-M-S^P-P-K)

Host: Rabbit

Antigen Synonyms: Human

Conjugation: Unconjugated

Predicated Band Size:

180 kD

Observed Band Size:

180 kD

Formulation:

1 mg/ml in phosphate buffered saline (without Mg²⁺ and Ca²⁺), pH 7.4, 150 mM NaCl, 0.02% sodium azide, and 50% glycerol

Ig Subclass: Rabbit IgG

Specificity: GenScript Rabbit Anti-IRS-1 (Phospho-Ser⁶³⁶) Polyclonal Antibody detects endogenous levels of IRS-1 only when phosphorylated at serine 636.

Purification: The antibody is affinity-purified from rabbit antiserum by affinity chromatography using epitope-specific phosphopeptide. The antibody against non-phosphopeptide is removed by chromatography using non-phosphopeptide corresponding to the phosphorylation site.

Applications:

WB: 1:500-1:1,000

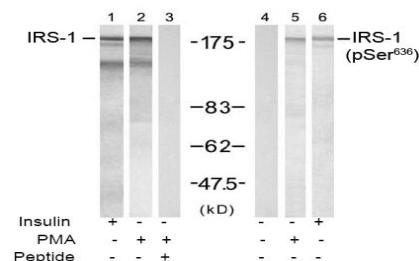
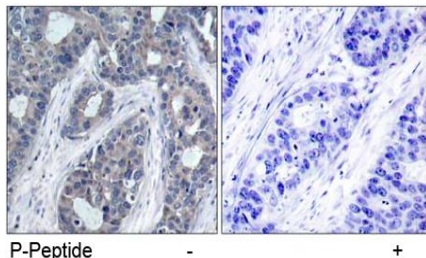
IHC: 1:50-1:100

Species Reactivity: Human, mouse, rat

Storage:

Store at -20°C/1 year.

Example



Immunohistochemical analysis of paraffin-embedded human breast carcinoma tissue using Rabbit Anti-IRS-1 (Phospho-Ser⁶³⁶) Polyclonal Antibody (GenScript, A00503)

Western blot analysis of extract from 293 cells treated with insulin (100 nM, 30 min) or PMA (0.2 µM, 15 min) using Rabbit Anti-IRS-1 (Ab-636) Polyclonal Antibody (GenScript, A00575, lane 1, 2, and 3) and Rabbit Anti-IRS-1 (Phospho-Ser⁶³⁶) Polyclonal Antibody (GenScript, A00503, lane 4, 5, and 6)