

DATASHEET

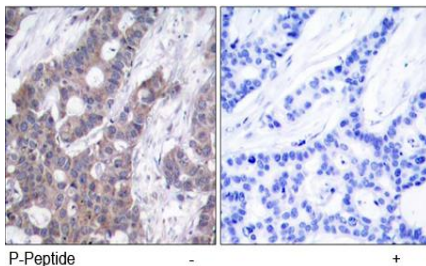
Version: 2016-08-17

Stathmin 1 Antibody (Phospho-Ser¹⁶), pAb, Rabbit**Cat. No.:** A00505-100**Size:** 100 µg**Synonyms:** Anti Stathmin 1 (Phospho-Ser¹⁶); Anti Stathmin 1**Description:**

none

Immunogen: Synthesized phosphopeptide derived from human Stathmin 1 around the phosphorylation site of serine 16 (R-A-S^P-G-Q).**Host:** Rabbit**Antigen Synonyms:** Human**Conjugation:** Unconjugated**Formulation:**1 mg/ml in phosphate buffered saline (without Mg²⁺ and Ca²⁺), pH 7.4, 150 mM NaCl, 0.02% sodium azide, and 50% glycerol**Ig Subclass:** Rabbit IgG**Specificity:** GenScript Rabbit Anti-Stathmin 1 (Phospho-Ser¹⁶) Polyclonal Antibody detects endogenous levels of Stathmin 1 only when phosphorylated at serine 16.**Purification:** GenScript Rabbit Anti-Stathmin 1 (Phospho-Ser¹⁶) Polyclonal Antibody is affinity-purified from rabbit antiserum by affinity chromatography using epitope-specific phosphopeptide. The antibody against non-phosphopeptide is removed by chromatography using non-phosphopeptide corresponding to the phosphorylation site.**Applications:****IHC:** 1:50-1:100**Species Reactivity:** Human, mouse, rat**Storage:**

Store at -20°C/1 year.

Example

Immunohistochemical analysis of paraffin-embedded human breast carcinoma tissue, using Rabbit Anti-Stathmin 1 (Phospho-Ser¹⁶) Polyclonal Antibody (GenScript, A00505)