

DATASHEET

Version: 2016-08-17

NF-κB p105/p50 Antibody (Ab-932), pAb, Rabbit

Cat. No.: A00555-100

Size: 100 µg

Synonyms: Anti NF-κB p105/p50 (Ab-932); Anti NF-κB p105/p50

Description:

none

Immunogen: Synthesized non-phosphopeptide derived from human NF-κB p105/p50 around the phosphorylation site of serine 932 (E-T-S^P-F-R)

Host: Rabbit

Antigen Synonyms: Human

Conjugation: Unconjugated

Predicated Band Size:

50 kD, 120 kD

Observed Band Size:

120 kD

Formulation:

1 mg/ml in phosphate buffered saline (without Mg²⁺ and Ca²⁺), pH 7.4, 150 mM NaCl, 0.02% sodium azide, and 50% glycerol

Ig Subclass: Rabbit IgG

Specificity: GenScript Rabbit Anti-NF-κB p105/p50 (Ab-932) Polyclonal Antibody detects endogenous levels of total NFκB-p105/p50 protein.

Purification: The antibody is affinity-purified from rabbit antiserum by affinity chromatography using epitope-specific immunogen.

Applications:

Western blot: 1:500-1:1,000

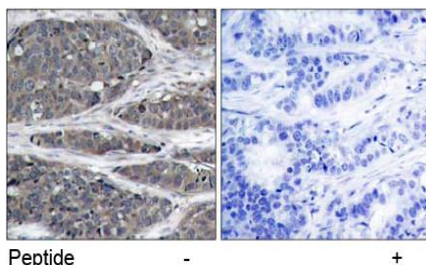
IHC: I:50-1:100

Species Reactivity: Human, mouse, rat

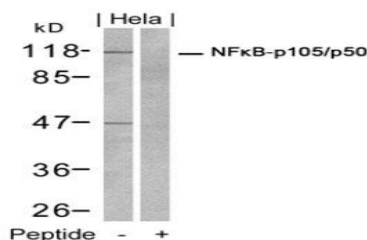
Storage:

Store at -20°C/1 year.

Example



Immunohistochemical analysis of paraffin-embedded human breast carcinoma tissue, using Rabbit Anti-NF-κB p105/p50 (Ab-932) Polyclonal Antibody (GenScript, A00555)



Western blot analysis of extracts from HeLa cells using Rabbit Anti-NF-κB p105/p50 (Ab-932) Polyclonal Antibody (GenScript, A00555) and the same antibody preincubated with blocking peptide.