

## DATASHEET

Version: 2016-08-17

### BRCA1 Antibody (Ab-1423), pAb, Rabbit

**Cat. No.:** A00567-100

**Size:** 100 µg

**Synonyms:** Anti BRCA1 (Ab-1423); Anti BRCA1

**Description:**

none

**Immunogen:** Synthesized non-phosphopeptide derived from human BRCA1 around the phosphorylation site of serine 1423 (H-G-S<sup>P</sup>-Q-P)

**Host:** Rabbit

**Antigen Synonyms:** Human

**Conjugation:** Unconjugated

**Predicated Band Size:**

220 kD

**Observed Band Size:**

220 kD

**Formulation:**

1 mg/ml in phosphate buffered saline (without Mg<sup>2+</sup> and Ca<sup>2+</sup>), pH 7.4, 150 mM NaCl, 0.02% sodium azide, and 50% glycerol

**Ig Subclass:** Rabbit IgG

**Specificity:** GenScript Rabbit Anti-BRCA1 (Ab-1423)

Polyclonal Antibody detects endogenous levels of total BRCA1 protein.

**Purification:** The antibody is affinity-purified from rabbit antiserum by affinity chromatography using epitope-specific immunogen.

**Applications:**

**WB:** 1:500-1:1,000

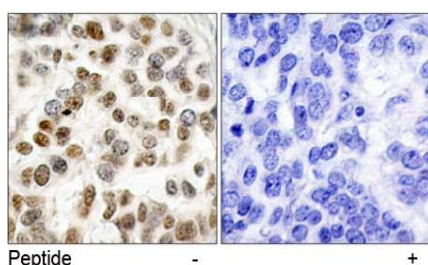
**IHC:** 1:50-1:100

**Species Reactivity:** Human

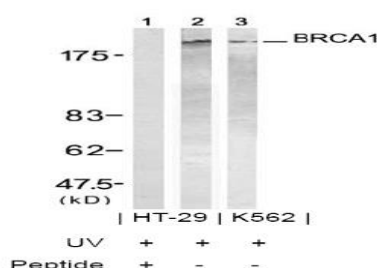
**Storage:**

Store at -20°C/1 year.

### Example



Immunohistochemical analysis of paraffin-embedded human breast carcinoma tissue, using Rabbit Anti-BRCA1 (Ab-1423) Polyclonal Antibody (GenScript, A00567)



Western blot analysis of extract from HT-29 and K562 cells treated with UV (20 min), using Rabbit Anti-BRCA1 (Ab-1423) Polyclonal Antibody (GenScript, A00567, lane 1, 2 and 3)