

DATASHEET

Version: 2016-08-17

PKC δ Antibody (Phospho-Ser⁶⁴⁵), pAb, Rabbit

Cat. No.: A00576-100

Size: 100 μ g

Synonyms: Anti PKC δ (Phospho-Ser⁶⁴⁵); Anti PKC δ

Description:

none

Immunogen: Synthesized phosphopeptide derived from human PKC δ around the phosphorylation site of serine 645 (R-L-S^P-Y-S)

Host: Rabbit

Antigen Synonyms: Human

Conjugation: Unconjugated

Predicated Band Size:

78 kD

Observed Band Size:

78 kD

Formulation:

1 mg/ml in phosphate buffered saline (without Mg²⁺ and Ca²⁺), pH 7.4, 150 mM NaCl, 0.02% sodium azide, and 50% glycerol

Ig Subclass: Rabbit IgG

Specificity: Rabbit Anti PKC δ (Phospho-Ser⁶⁴⁵) detects endogenous levels of PKC δ only when phosphorylated at serine 645.

Purification: The antibody is affinity-purified from rabbit antiserum by affinity chromatography using epitope-specific phosphopeptide. The antibody against non-phosphopeptide is removed by chromatography using non-phosphopeptide corresponding to the phosphorylation site.

Applications:

WB: 1:500-1:1,000

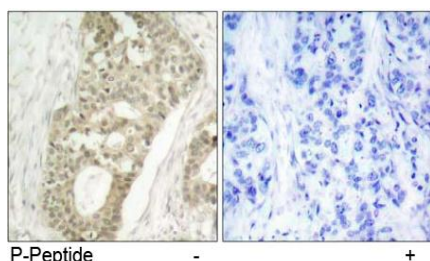
IHC: 1:50-1:100

Species Reactivity: Human, mouse, rat

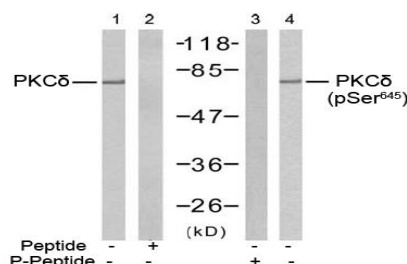
Storage:

Store at -20°C/1 year.

Example



Immunohistochemical analysis of paraffin-embedded human breast carcinoma tissue, using Rabbit Anti-PKC δ (Phospho-Ser⁶⁴⁵) Polyclonal Antibody (GenScript, A00576)



Western blot analysis of extract from MCF7 cells using Rabbit Anti-PKC δ (Ab-645) Polyclonal Antibody (GenScript, A00509, lane 1 and 2) and Rabbit Anti-PKC δ (Phospho-Ser⁶⁴⁵) Polyclonal Antibody (GenScript, A00576, lane 3 and 4)