

DATASHEET

Version: 2016-08-17

CBP-tag Antibody, pAb, Rabbit

Cat. No.: A00635-40

Size: 40 µg

Synonyms: Rabbit Anti-CBP-tag pAb;

Description:

CBP tag is a calmodulin-binding peptide, KRRWKKNFIAVSAANRFKKISSSGAL, derived from skeletal/cardiac muscle myosin light chain kinase 2. GenScript **Rabbit Anti-CBP-tag Polyclonal Antibody** is developed in rabbit hosts using a synthetic CBP tag peptide conjugated to KLH. CBP-tag Antibody is highly purified from rabbit antiserum by immunoaffinity chromatography. The antibody is suitable for detecting CBP fusion proteins.

Immunogen: A synthetic CBP tag peptide KRRWKKNFIAVSAANRFKKISSSGAL conjugated to KLH

Host: Rabbit

Conjugation: Unconjugated

Formulation:

0.5 mg/ml, lyophilized with PBS, pH 7.4, containing 0.02% sodium azide

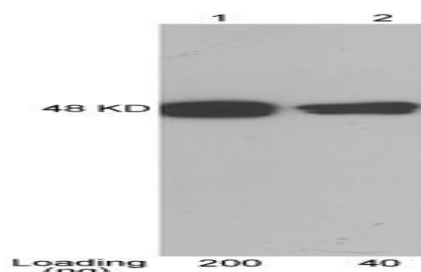
Ig Subclass: Rabbit IgG

Specificity: GenScript CBP-tag Antibody recognizes CBP tagged fusion proteins.

Purification: Immunoaffinity chromatography

Applications:

Example



Working concentrations for specific applications should be determined by the investigator. The appropriate concentrations may be affected by secondary antibody affinity, antigen concentration, the sensitivity of the method of detection, temperature, the length of the incubations, and other factors. The suitability of this antibody for applications other than those listed below has not been determined. The following concentration ranges are recommended starting points for this product.

ELISA: 0.05-0.2 µg/ml

Western blot: 0.1-1.0 µg/ml

Western Blot Using ONE-HOUR Western™ Kit: For quick results, GenScript ONE-HOUR Western™ Kit L00204C is recommended. 10 µg of this antibody is mixed with 10 ml of WB solution for 8 cm x 8 cm membrane.

Immunoprecipitation: 1-5 µg/ml.

Other applications: user-optimized

Species Reactivity: Mouse, rat, bovine and rabbit

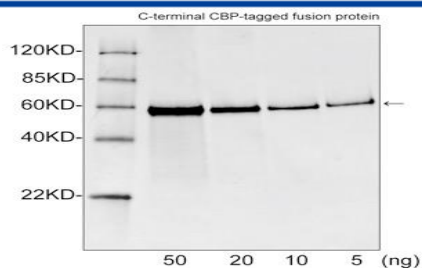
Reconstitution:

Reconstitute the lyophilized powder with deionized water (or equivalent) to an antibody concentration of 0.5 mg/ml.

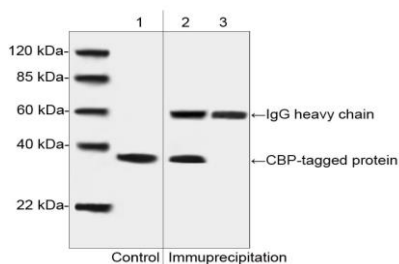
Storage:

The antibody is stable in lyophilized form if stored at -20°C or below. The reconstituted antibody can be stored for 2-3 weeks at 2-8°C. For long term storage, aliquot and store at -20°C or below. Avoid repeated freezing and thawing cycles.

Lane 1-2: CBP tag fusion protein expressed in *E. coli* Cell Lysate
Antibody: 1 µg/ml Rabbit Anti-CBP-tag Polyclonal Antibody (GenScript, A00635)
The result was developed with One-Step Western™ Basic Kit (GenScript, L00204C)



Western blot analysis of CBP tagged fusion proteins expressed in *E. coli* cell lysate using Rabbit Anti-CBP-tag Polyclonal Antibody (GenScript, A00635, 1 µg/ml). The signal was developed with IRDy™ 800 Conjugated Goat Anti-Rabbit IgG.



Western blot analysis of CBP-tagged protein from the transfected CHO cell lysates and its immuno-precipitates.

Lane 1: CBP-tagged protein from the transfected CHO cell lysates as input control.

Lane 2: Immuno-precipitates of CBP-tagged protein from the transfected CHO cell lysates with CBP Tag Antibody, pAb, Rabbit (GenScript, A00635).

Lane 3: Immuno-precipitates of the CBP-tagged protein from the transfected CHO cell lysates with Rabbit IgG Control (Whole Molecule), Purified (GenScript, A01008).