

DATASHEET

Version: 2016-08-17

EGFR Antibody (Phospho-Thr⁶⁷⁸), pAb, Rabbit

Cat. No.: A00667-100

Size: 100 µg

Synonyms: Rabbit Anti-EGFR (Phospho-Thr⁶⁷⁸) pAb; Anti EGFR

Description:

none

Immunogen: Synthesized phosphopeptide derived from human EGFR around the phosphorylation site of threonine 678 (K-R-T^P-L-R)

Host: Rabbit

Antigen Synonyms: Human

Conjugation: Unconjugated

Predicated Band Size:

175 kD

Observed Band Size:

175 kD

Formulation:

1 mg/ml in phosphate buffered saline (without Mg²⁺ and Ca²⁺), pH 7.4, 150 mM NaCl, 0.02% sodium azide, and 50% glycerol

Ig Subclass: Rabbit IgG

Specificity: GenScript Rabbit Anti-EGFR (Phospho-Thr⁶⁷⁸) Polyclonal Antibody detects endogenous levels EGFR only when phosphorylated at threonine 678.

Purification: GenScript Rabbit Anti-EGFR (Phospho-Thr⁶⁷⁸) Polyclonal Antibody is affinity-purified from rabbit antiserum by affinity chromatography using epitope-specific phosphopeptide. The antibody against non-phosphopeptide is removed by chromatography using non-phosphopeptide corresponding to the phosphorylation site.

Applications:

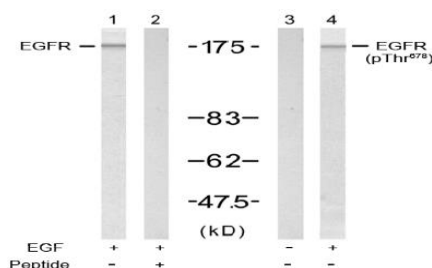
Western blot: 1:500-1:1,000

Species Reactivity: Human, mouse, rat

Storage:

Store at -20°C/1 year.

Example



Western blot analysis of extracts from A431 cells untreated or treated with EGF (200 ng/ml, 5 min) using Rabbit Anti-EGFR (Ab-678) Polyclonal Antibody (GenScript, A00666, Lane 1 and 2) and Rabbit Anti-EGFR (Phospho-Thr⁶⁷⁸) Polyclonal Antibody (GenScript, A00667, Lane 3 and 4)