

## DATASHEET

Version: 2016-08-17

### tag-100-tag Antibody, pAb, Rabbit

**Cat. No.:** A00677-40

**Size:** 40 µg

**Synonyms:** Rabbit Anti-tag-100-tag pAb;

#### Description:

Well-characterized antibodies against short-sequence epitope tags are common in the study of protein expression in several different expression systems. Tag-100 tag is an epitope tag composed of a 12-residue peptide, EETARFQPGYRS, derived from the C-termini of mammalian MAPK/ERK kinases.

**Immunogen:** Tag-100-tag peptide EETARFQPGYRS conjugated to KLH

**Host:** Rabbit

**Antigen Synonyms:** Human

**Conjugation:** Unconjugated

#### Formulation:

1 mg/ml in PBS, pH7.4, containing 0.02% sodium azide

**Ig Subclass:** Rabbit IgG

**Specificity:** This Antibody recognizes Tag-100 tagged fusion proteins.

**Purification:** Immunoaffinity chromatography

#### Applications:

Working concentrations for specific applications should be determined by the investigator. The appropriate concentrations may be affected by secondary antibody affinity, antigen concentration, the sensitivity of the method of detection, temperature, the length of the incubations, and other factors. The suitability of this antibody for applications other than those listed below has not been determined. The following concentration ranges are recommended starting points for this product.

**ELISA:** 0.05-0.2 µg/ml

**Western blot:** 0.1-1.0 µg/ml

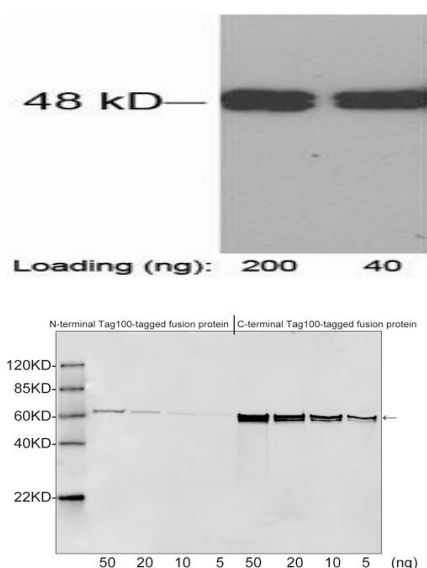
**Western Blot Using ONE-HOUR Western™ Kit:** For quick results, ONE-HOUR Western™ Complete Kit (GenScript, L00204C) is recommended. 10 µg of this antibody is mixed with 10 ml of WB solution for 8 cm X 8 cm membrane.

**Other applications:** user-optimized

#### Storage:

The antibody is stable for 2-3 weeks if stored at 2-8°C. For long term storage, aliquot and store at -20°C or below. Avoid repeated freezing and thawing cycles.

#### Example



Loading: tag-100-tag fusion protein expressed in *E. coli* cell lysate  
 Antibody: 1 µg/ml Rabbit Anti-tag-100-tag Polyclonal Antibody (GenScript, A00677)  
 The result was developed with One-Step Western™ Complete Kit (Rabbit) (GenScript, L00204C)

Western blot analysis of Tag-100 tagged fusion proteins expressed in *E. coli* cell lysate using Rabbit Anti-Tag-100-tag Polyclonal Antibody (GenScript, A00677, 1 µg/ml) The signal was developed with IRDye™ 800 Conjugated Goat Anti-Rabbit IgG.