

DATASHEET

Version: 2016-08-17

EB1 Antibody, pAb, Rabbit

Cat. No.: A00678-40

Size: 40 µg

Synonyms: MAPRE1 antibody; Anti PB1 pAb

Description:

EB1, also known as MAPRE1, is a regulator of microtubule dynamics that localizes at the growing plus ends of microtubules and the centrosome. It is important for anchoring cytoplasmic microtubule (MT) minus ends to the subdistal appendages of the mother centriole. EB1 plays a role in the regulation of MT dynamics and is implicated in regulation of cell polarity and chromosome stability. EB1 proteins interact physically with the adenomatous polyposis coli (APC) tumor suppressor protein, targeting APC to microtubule plus ends.

GenScript **Rabbit Anti-EB1 Polyclonal Antibody** is developed in rabbit using a KLH-coupled synthetic peptide within residues 130-180 of human EB1 protein (Swiss Prot: Q15691).

Immunogen: KLH-coupled synthetic peptide within residues 130-180 of human EB1 protein (Swiss Prot: Q15691).

Host: Rabbit

Antigen Synonyms: Human

Conjugation: Unconjugated

Formulation:

0.5 mg/ml, lyophilized with PBS, pH 7.4, containing 0.02% sodium azide

Ig Subclass: Rabbit IgG

Specificity: GenScript Rabbit Anti-EB1 Polyclonal Antibody detects endogenous levels of human EB1.

Positive Control: Hela and HEK293

Purification: Immunoaffinity chromatography.

Applications:

Working concentrations for specific applications should be determined by the investigator. The appropriate concentrations may be affected by secondary antibody affinity, antigen concentration, the sensitivity of the method of detection, temperature, the length of the incubations, and other factors. The suitability of this antibody for applications other than those listed below has not been determined. The following concentration ranges are recommended starting points for this product.

Western blot: 0.5-1 µg/ml

Other Applications: user-optimized

Species Reactivity: Human

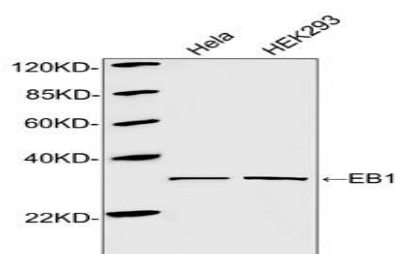
Reconstitution:

Reconstitute the lyophilized powder with deionized water (or equivalent) to an antibody concentration of 0.5 mg/ml.

Storage:

The antibody is stable in lyophilized form if stored at -20°C or below. The reconstituted antibody can be stored for 2-3 weeks at 2-8°C. For long term storage, aliquot and store at -20°C or below. Avoid repeated freezing and thawing cycles.

Example



Western blot analysis of cell lysates using 1 µg/ml Rabbit Anti-EB1 Polyclonal Antibody (GenScript, A00678)
The signal was developed with IRDye™ 800 Conjugated Goat Anti-Rabbit IgG
Predicted Size: 30 KD
Observed Size: 30 KD