

## DATASHEET

Version: 2016-08-17

### SNAP-tag Antibody, pAb, Rabbit

**Cat. No.:** A00684-40

**Size:** 40 µg

**Synonyms:** Anti SNAP-tag polyclonal antibody;

#### Description:

Well-characterized antibodies for epitope tags have been widely used in the study of protein expression in various systems. The SNAP-tag is a self-labeling protein tag that forms a highly stable, covalent thioether bond with fluorophores and other substituted groups on its benzyl guanine substrate. The expressed SNAP-tag fusion proteins can be used in many different assay formats depending upon the labeling substrate employed.

GenScript **Rabbit Anti-SNAP-tag Polyclonal Antibody** is developed in rabbit hosts using purified recombinant SNAP-tag fusion protein. This polyclonal antibody is highly purified from rabbit antiserum by immunoaffinity chromatography.

**Immunogen:** Purified recombinant SNAP-tag fusion protein

**Host:** Rabbit

**Conjugation:** Unconjugated

#### Formulation:

0.5 mg/ml, lyophilized with PBS, pH 7.4, containing 0.02% sodium azide

**Ig Subclass:** Rabbit IgG

**Specificity:** Rabbit Anti-SNAP-tag Polyclonal Antibody specifically reacts with fusion proteins containing the SNAP-tag.

**Purification:** Immunoaffinity chromatography

#### Applications:

Working concentrations for specific applications should be determined by the investigator. The appropriate concentrations may be affected by secondary antibody affinity, antigen concentration, the sensitivity of the method of detection, temperature, the length of the incubations, and other factors. The suitability of this antibody for applications other than those listed below has not been determined. The following concentration ranges are recommended starting points for this product.

**ELISA:** 0.05-0.2 µg/ml

**Western blot:** 0.1-1.0 µg/ml

**Other applications:** user-optimized

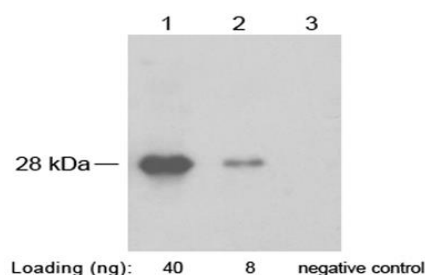
#### Reconstitution:

Reconstitute the lyophilized antibody with deionized water to the final concentration of 0.5 mg/ml.

#### Storage:

The antibody is stable for 2-3 weeks if stored at 2-8°C. For long term storage, aliquot and store at -20°C or below. Avoid repeated freezing and thawing cycles.

#### Example



Lane 1-2: SNAP fusion protein in 293 cell lysate (28 kDa)

Lane 3: Negative 293 cell lysate

Primary antibody: 1 µg/ml Rabbit Anti-SNAP-tag Polyclonal Antibody (GenScript, A00684)

Secondary antibody: Goat Anti-Rabbit IgG (H&L) [HRP] Polyclonal Antibody (GenScript, A00098, 1:10,000)

The signal was developed with LumiSensor™ HRP Substrate Kit (GenScript, L00221V500)