

## DATASHEET

Version: 2016-08-17

### $\beta$ -Amyloid Antibody (25-35), pAb, Rabbit

**Cat. No.:** A00687-40

**Size:** 40  $\mu$ g

**Synonyms:** Rabbit Anti  $\beta$ -Amyloid (25-35) pAb; Anti  $\beta$ -Amyloid (25-35) pAb

#### Description:

A number of mutations, identified in the gene encoding the  $\beta$ -amyloid precursor protein ( $\beta$ APP), have been linked to early-onset Familial Alzheimers Disease.  $\beta$ APP is cleaved sequentially by the proteolytic enzymes  $\beta$ -secretase and  $\gamma$ -secretase to produce  $\beta$ -amyloid ( $A\beta$ ) peptides with the  $A\beta$ 1-42(43) and the  $A\beta$ 1-40 forms being the most prevalent. Secreted  $A\beta$  peptides can bind to scavenger receptors and the receptor for advanced glycation endproducts.  $A\beta$  peptides are degraded either via a reuptake mechanism followed by endosomal degradation or by an extracellular insulin-degrading enzyme. Extracellular accumulation of  $A\beta$  leads to formation of aggregates, fibrils, and eventually amyloid deposits called neuritic plaques, a hallmark of Alzheimer's disease.  $\beta$ -Amyloid antibodies and peptides have been developed as tools for elucidating the biology of Alzheimers disease.

**Immunogen:** Synthetic peptide corresponding to amino acids 25-35 of human  $\beta$ -Amyloid conjugated to KLH

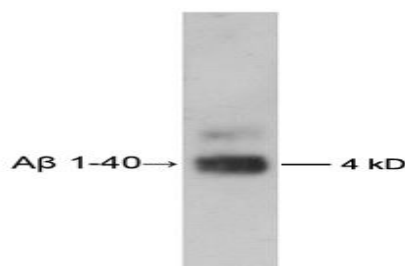
**Host:** Rabbit

**Antigen Synonyms:** Human

**Conjugation:** Unconjugated

**Formulation:**

#### Example



See label for antibody concentration

Buffer: PBS, pH 7.4, containing 30% glycerol and 0.02% sodium azide

**Ig Subclass:** Rabbit IgG

**Specificity:** GenScript Rabbit Anti- $\beta$ -Amyloid (25-35) Polyclonal Antibody detects human  $\beta$ -amyloid 25-35 and  $\beta$ -amyloid 1-40 and does not react with  $\beta$ -amyloid 1-42.

**Purification:** Immunoaffinity chromatography

#### Applications:

Working concentrations for specific applications should be determined by the investigator. The appropriate concentrations may be affected by secondary antibody affinity, antigen concentration, the sensitivity of the method of detection, temperature, the length of the incubations, and other factors. The suitability of this antibody for applications other than those listed below has not been determined. The following concentration ranges are recommended starting points for this product.

**ELISA:** 0.05-0.2  $\mu$ g/ml

**Western blot:** 0.5-2.0  $\mu$ g/ml

**Other applications:** user-optimized

**Species Reactivity:** Human

#### Storage:

The antibody is stable for 2-3 weeks if stored at 2-8°C. For long term storage, aliquot and store at -20°C or below. Avoid repeated freezing and thawing cycles.

Western blot analysis of human  $\beta$ -Amyloid 1-40 peptide using Rabbit Anti  $\beta$ -Amyloid (25-35) Polyclonal Antibody (GenScript, A00687)

The signal was developed with Goat Anti-Rabbit IgG (H&L) [HRP] Polyclonal Antibody (GenScript, A00098) and LumiSensor™ HRP Substrate Kit (GenScript, L00221V500)